

For Research Use Only

SLAM/CD150 Monoclonal antibody, PBS Only



Catalog Number: 60043-1-PBS

Basic Information

Catalog Number:

60043-1-PBS

Size:

1 mg/ml

Source:

mouse

Isotype:

IgM

Immunogen Catalog Number:

AG1386

GenBank Accession Number:

BC012602

GeneID (NCBI):

6504

UNIPROT ID:

Q13291

Full Name:

signaling lymphocytic activation
molecule family member 1

Calculated MW:

37 kDa

Observed MW:

80 kDa

Purification Method:

Thiophilic affinity chromatograph

CloneNo.:

5B4G1

Applications

Tested Applications:

WB, ELISA

Species Specificity:

human

Background Information

Signaling lymphocytic activation molecule (SLAM, also known as SLAMF1 or CD150) is a 70-95 kDa transmembrane glycoprotein that belongs to the immunoglobulin gene superfamily. SLAM is constitutively expressed on peripheral blood memory T-cells, T-cell clones, immature thymocytes and a proportion of B-cells, and is rapidly induced on naive T-cells after activation. SLAM is involved in T cell stimulation and cytokine production, and may play an important role in the regulation of immune responses to pathogens.

Storage

Storage:

Store at -80°C.

The product is shipped with ice packs. Upon receipt, store it immediately at -80°C

Storage Buffer:

PBS only

For technical support and original validation data for this product please contact:

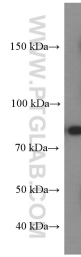
T: 4006900926

E: Proteintech-CN@ptglab.com

W: ptgcn.com

This product is exclusively available under Proteintech Group brand and is not available to purchase from any other manufacturer.

Selected Validation Data



Raji cells were subjected to SDS PAGE followed by western blot with 60043-1-Ig (SLAM/CD150) antibody at dilution of 1:2000 incubated at room temperature for 1.5 hours. This data was developed using the same antibody clone with 60043-1-PBS in a different storage buffer formulation.