

For Research Use Only

# STOML2 Monoclonal antibody, PBS Only



Catalog Number: 60052-1-PBS

Featured Product

## Basic Information

Catalog Number:

60052-1-PBS

Size:

1 mg/ml

Source:

Mouse

Isotype:

IgG2b

Immunogen Catalog Number:

AG0363

GenBank Accession Number:

BC002442

GeneID (NCBI):

30968

UNIPROT ID:

Q9UJZ1

Full Name:

stomatin (EPB72)-like 2

Calculated MW:

356 aa, 39 kDa

Observed MW:

39 kDa

Purification Method:

Protein A purification

CloneNo.:

1A2E9

## Applications

Tested Applications:

WB, IP, Indirect ELISA, IHC

Species Specificity:

human, mouse, rat, pig

## Background Information

Human stomatin (band 7.2b) is a 31-kDa erythrocyte membrane protein of unknown function but implicated in the control of ion channel permeability, mechanoreception, and lipid domain organization. Stomatin (EPB72)-like 2 (STOML2, synonyms: SLP-2, HSPC108) is a 38.5-kDa protein that is overall approximately 20% similar to human stomatin. STOML2 is also present in mature human erythrocytes, but lacks a characteristic NH(2)-terminal hydrophobic domain found in other stomatin homologues. STOML2 may link stomatin or other integral membrane proteins to the peripheral cytoskeleton and thereby play a role in regulating ion channel conductances or the organization of sphingolipid and cholesterol-rich lipid rafts.

## Storage

Storage:

Store at -80°C.

The product is shipped with ice packs. Upon receipt, store it immediately at -80°C

Storage Buffer:

PBS Only

For technical support and original validation data for this product please contact:

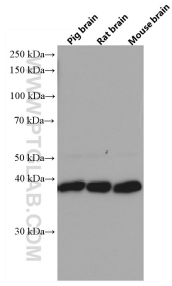
T: 4006900926

E: [Proteintech-CN@ptglab.com](mailto:Proteintech-CN@ptglab.com)

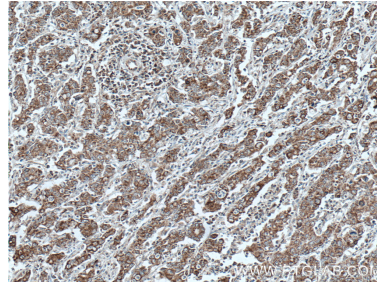
W: [ptgcn.com](http://ptgcn.com)

This product is exclusively available under Proteintech Group brand and is not available to purchase from any other manufacturer.

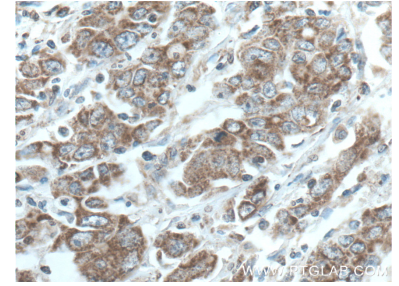
## Selected Validation Data



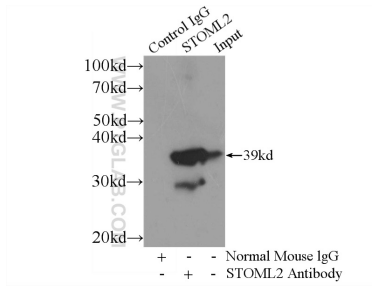
Pig, rat, and mouse brain tissues were subjected to SDS PAGE followed by western blot with 60052-1-Ig (STOML2 antibody) at dilution of 1:10000 incubated at room temperature for 1.5 hours. This data was developed using the same antibody clone with 60052-1-PBS in a different storage buffer formulation.



Immunohistochemical analysis of paraffin-embedded human stomach cancer tissue slide using 60052-1-Ig (STOML2 antibody) at dilution of 1:1000 (under 10x lens. Heat mediated antigen retrieval with Tris-EDTA buffer (pH 9.0). This data was developed using the same antibody clone with 60052-1-PBS in a different storage buffer formulation.



Immunohistochemical analysis of paraffin-embedded human stomach cancer tissue slide using 60052-1-Ig (STOML2 antibody) at dilution of 1:1000 (under 40x lens. Heat mediated antigen retrieval with Tris-EDTA buffer (pH 9.0). This data was developed using the same antibody clone with 60052-1-PBS in a different storage buffer formulation.



IP result of anti-STOML2 (IP:60052-1-Ig, 4ug; Detection:60052-1-Ig 1:1000) with mouse brain tissue lysate 4000ug. This data was developed using the same antibody clone with 60052-1-PBS in a different storage buffer formulation.