

For Research Use Only

GMF Beta Monoclonal antibody

Catalog Number: 60062-1-Ig **5 Publications**



Basic Information

Catalog Number: 60062-1-Ig	GenBank Accession Number: BC005359	Purification Method: Protein G purification
Size: 780 µg/ml	GeneID (NCBI): 2764	CloneNo.: 3B10A2
Source: Mouse	UNIPROT ID: P60983	Recommended Dilutions: WB 1:1000-1:8000 IHC 1:50-1:500 IF/ICC 1:200-1:800
Isotype: IgG1	Full Name: glia maturation factor, beta	
Immunogen Catalog Number: AG1104	Calculated MW: 17 kDa	
	Observed MW: 17 kDa	

Applications

Tested Applications: IF/ICC, IHC, WB, ELISA	Positive Controls: WB : fetal human brain tissue, pig liver tissue IHC : human brain tissue, IF/ICC : U-87 MG cells, HeLa cells
Cited Applications: IF, IP	
Species Specificity: human, pig	
Cited Species: human, mouse	
Note-IHC: suggested antigen retrieval with TE buffer pH 9.0; (*) Alternatively, antigen retrieval may be performed with citrate buffer pH 6.0	

Background Information

GMFB, Glia maturation factor beta, is a nerve growth factor implicated in nervous system development. It was reported that GMF-beta promotes the phenotypic expression of glia and neurons and inhibits the proliferation of their respective tumors in culture cells. GMF-beta protein is specific to the brain where it is expressed in glial cells (mainly astrocytes) and insome neurons. Higher levels of GMFB were found in the central nervous system, except for the spinal cord, and in thymus and colon.

Notable Publications

Author	Pubmed ID	Journal	Application
Brawnie Petrov	29531242	Transl Psychiatry	IP
Tong Zhu	35860559	Front Oncol	IF
Duraisamy Kempuraj	26275153	PLoS One	IF

Storage

Storage:
Store at -20°C. Stable for one year after shipment.
Storage Buffer:
PBS with 0.02% sodium azide and 50% glycerol pH 7.3.
Aliquoting is unnecessary for -20°C storage

For technical support and original validation data for this product please contact:

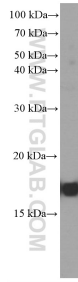
T: 4006900926

E: Proteintech-CN@ptglab.com

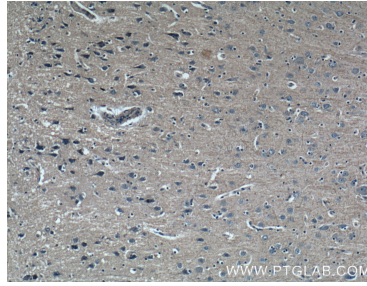
W: ptgcn.com

This product is exclusively available under Proteintech Group brand and is not available to purchase from any other manufacturer.

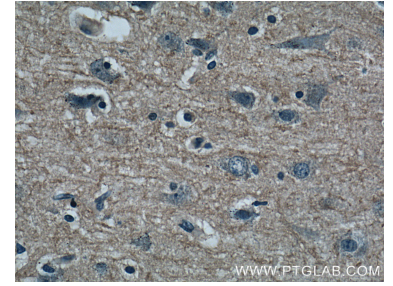
Selected Validation Data



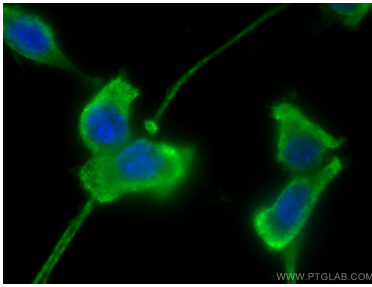
fetal human brain tissue were subjected to SDS PAGE followed by western blot with 60062-1-Ig (GMF-beta antibody at dilution of 1:4000 incubated at room temperature for 1.5 hours.



Immunohistochemical analysis of paraffin-embedded human brain tissue slide using 60062-1-Ig (GMF-beta antibody at dilution of 1:200 (under 10x lens).



Immunohistochemical analysis of paraffin-embedded human brain tissue slide using 60062-1-Ig (GMF-beta antibody at dilution of 1:200 (under 40x lens).



Immunofluorescent analysis of (-20°C Ethanol) fixed U-87 MG cells using GMF Beta antibody (60062-1-Ig, Clone: 3B10A2) at dilution of 1:400 and CoraLite®488-Conjugated AffiniPure Goat Anti-Mouse IgG(H+L).