

For Research Use Only

Neuropilin 1 Monoclonal antibody

Catalog Number: 60067-1-Ig 17 Publications



Basic Information

Catalog Number: 60067-1-Ig	GenBank Accession Number: BC007737	Purification Method: Protein A purification
Size: 1000 µg/ml	GeneID (NCBI): 8829	CloneNo.: 2H3F6
Source: Mouse	UNIPROT ID: O14786	Recommended Dilutions: WB 1:1000-1:6000 IF 1:50-1:500
Isotype: IgG1	Full Name: neuropilin 1	
Immunogen Catalog Number: AG0931	Calculated MW: 103 kDa	
	Observed MW: 130 kDa	

Applications

Tested Applications: FC, IF/ICC, WB, ELISA	Positive Controls: WB : human placenta tissue, fetal human brain tissue, human plasma, 37°C incubated human placenta tissue, pig brain tissue, HeLa cells, rabbit heart tissue, MDA-MB-231 cells, A549 cells, pig heart tissue IF : SH-SY5Y cells, human embryonic stem cells
Cited Applications: CoIP, IF, IP, WB	
Species Specificity: human, pig, rabbit	
Cited Species: human, mouse, Xenopus	

Background Information

Neuropilin-1 (NRP1) is a 130-140 kDa transmembrane glycoprotein expressed by endothelial, dendritic, and regulatory T cells, as well as several other normal cell types and malignant tumor cells. NRP1 was first identified as a semaphorin (SEMA) receptor, involved in axonal guidance in embryonic development. NRP1 was also shown to act as a receptor for vascular endothelial growth factor (VEGF) and a promoter of angiogenesis through its interaction with VEGF-A165 (and other VEGFs) and the receptor tyrosine kinase (RTK) VEGF-R2. NRP1 plays versatile roles in angiogenesis, axon guidance, cell survival, migration, and invasion.

Notable Publications

Author	Pubmed ID	Journal	Application
Chunxi Liu	25204970	Mol Cell Biochem	WB
Emmanuel Laplantine	36093378	iScience	WB
Max Koppers	31746735	Elife	IF

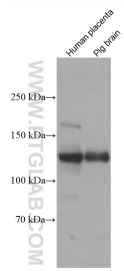
Storage

Storage:
Store at -20°C. Stable for one year after shipment.
Storage Buffer:
PBS with 0.1% sodium azide and 50% glycerol pH 7.3.
Aliquoting is unnecessary for -20°C storage

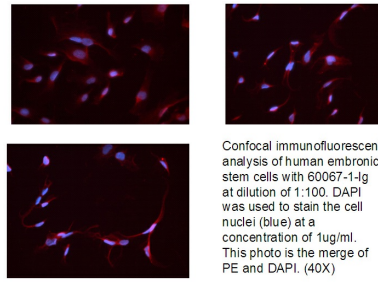
For technical support and original validation data for this product please contact:
T: 4006900926 E: Proteintech-CN@ptglab.com W: ptgcn.com

This product is exclusively available under Proteintech Group brand and is not available to purchase from any other manufacturer.

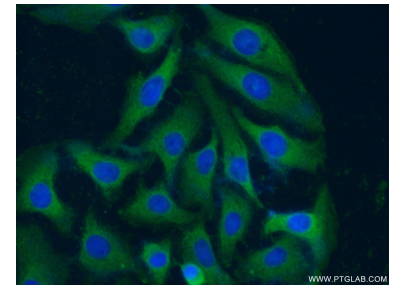
Selected Validation Data



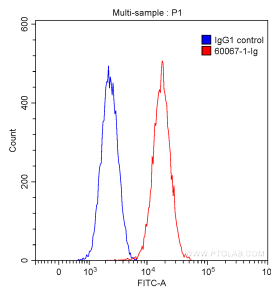
Various lysates were subjected to SDS PAGE followed by western blot with 60067-1-Ig (Neuropilin 1 antibody) at dilution of 1:3000 incubated at room temperature for 1.5 hours.



Confocal immunofluorescent analysis of human embryonic stem cells with 60067-1-Ig at dilution of 1:100. DAPI was used to stain the cell nuclei (blue) at a concentration of 1 µg/ml. This photo is the merge of PE and DAPI. (40X).



Immunofluorescent analysis of (-20°C Ethanol) fixed SH-SY5Y cells using 60067-1-Ig (Neuropilin 1 antibody) at dilution of 1:100 and Alexa Fluor 488-conjugated AffiniPure Goat Anti-Mouse IgG(H+L).



1X10⁶ SH-SY5Y cells were stained with 0.20 µg/test Anti-Human Neuropilin 1 (60067-1-Ig, Clone:2H3F6) (red) or 0.20 µg control antibody (blue) and CoraLite®488-Conjugated AffiniPure Goat Anti-Mouse IgG(H+L) with dilution 1:1000. Fixed with 90% MeOH.