

For Research Use Only

Neuropilin 1 Monoclonal antibody, PBS Only



Catalog Number: 60067-1-PBS

Basic Information

Catalog Number: 60067-1-PBS	GenBank Accession Number: BC007737	Purification Method: Protein A purification
Size: 1mg/ml	GeneID (NCBI): 8829	CloneNo.: 2H3F6
Source: Mouse	UNIPROT ID: O14786	
Isotype: IgG1	Full Name: neuropilin 1	
Immunogen Catalog Number: AG0931	Calculated MW: 103 kDa	
	Observed MW: 130 kDa	

Applications

Tested Applications:
WB, IF, Indirect ELISA

Species Specificity:
human, pig, rabbit

Background Information

Neuropilin-1 (NRP1) is a 130-140 kDa transmembrane glycoprotein expressed by endothelial, dendritic, and regulatory T cells, as well as several other normal cell types and malignant tumor cells. NRP1 was first identified as a semaphorin (SEMA) receptor, involved in axonal guidance in embryonic development. NRP1 was also shown to act as a receptor for vascular endothelial growth factor (VEGF) and a promoter of angiogenesis through its interaction with VEGF-A165 (and other VEGFs) and the receptor tyrosine kinase (RTK) VEGF-R2. NRP1 plays versatile roles in angiogenesis, axon guidance, cell survival, migration, and invasion.

Storage

Storage:
Store at -80°C.

Storage Buffer:
PBS Only

For technical support and original validation data for this product please contact:

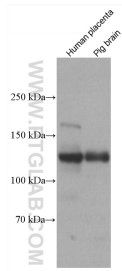
T: 4006900926

E: Proteintech-CN@ptglab.com

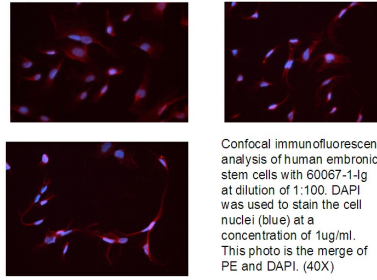
W: ptgcn.com

This product is exclusively available under Proteintech Group brand and is not available to purchase from any other manufacturer.

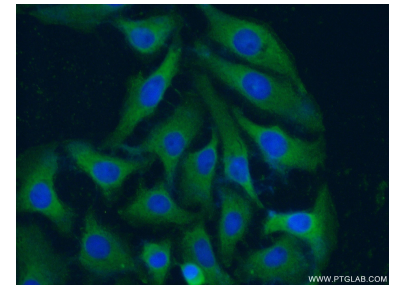
Selected Validation Data



Various lysates were subjected to SDS PAGE followed by western blot with 60067-1-Ig (Neuropilin 1 antibody) at dilution of 1:3000 incubated at room temperature for 1.5 hours. This data was developed using the same antibody clone with 60067-1-PBS in a different storage buffer formulation.



Confocal immunofluorescent analysis of human embryonic stem cells with 60067-1-Ig at dilution of 1:100. DAPI was used to stain the cell nuclei (blue) at a concentration of 1ug/ml. This photo is the merge of PE and DAPI. (40X). This data was developed using the same antibody clone with 60067-1-PBS in a different storage buffer formulation.



Immunofluorescent analysis of (-20°C Ethanol) fixed SH-SY5Y cells using 60067-1-Ig(Neuropilin 1 antibody) at dilution of 1:100 and Alexa Fluor 488-conjugated AffiniPure Goat Anti-Mouse IgG(H+L). This data was developed using the same antibody clone with 60067-1-PBS in a different storage buffer formulation.