

For Research Use Only

IRF5 Monoclonal antibody

Catalog Number: 60088-1-Ig **1 Publications**



Basic Information

Catalog Number: 60088-1-Ig	GenBank Accession Number: BC004201	Purification Method: Protein A purification
Size: 1000 µg/ml	GeneID (NCBI): 3663	CloneNo.: 2A10C5
Source: Mouse	UNIPROT ID: Q13568	Recommended Dilutions: WB 1:500-1:2000 IP 0.5-4.0 µg for 1.0-3.0 mg of total protein lysate IHC 1:20-1:200 IF/ICC 1:20-1:200
Isotype: IgG2a	Full Name: interferon regulatory factor 5	
Immunogen Catalog Number: AG0841	Calculated MW: 56 kDa	
	Observed MW: 63+110 kDa	

Applications

Tested Applications: IF/ICC, IHC, IP, WB, ELISA	Positive Controls: WB : HeLa cells, HepG2 cells IP : HeLa cells, IHC : human breast cancer tissue, human tonsillitis tissue IF/ICC : HepG2 cells,
Cited Applications: WB	
Species Specificity: human, mouse, pig	
Cited Species: human	
Note-IHC: suggested antigen retrieval with TE buffer pH 9.0; (*) Alternatively, antigen retrieval may be performed with citrate buffer pH 6.0	

Background Information

IRF5, also named as SLEB10, contains one IRF tryptophan pentad repeat DNA-binding domain and belongs to the IRF family. It is a transcription factor involved in the induction of interferons IFNA and IFNB and inflammatory cytokines upon virus infection. It is activated by TLR7 or TLR8 signaling. Genetic variations in IRF5 are associated with susceptibility to inflammatory bowel disease type 14 (IBD14) and systemic lupus erythematosus type 10 (SLEB10).

Notable Publications

Author	Pubmed ID	Journal	Application
Martin Heather J HJ	17609264	J Virol	WB

Storage

Storage:
Store at -20°C. Stable for one year after shipment.
Storage Buffer:
PBS with 0.1% sodium azide and 50% glycerol pH 7.3.
Aliquoting is unnecessary for -20°C storage

For technical support and original validation data for this product please contact:

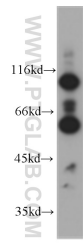
T: 4006900926

E: Proteintech-CN@ptglab.com

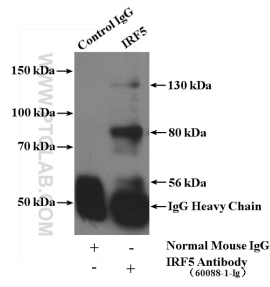
W: ptgcn.com

This product is exclusively available under Proteintech Group brand and is not available to purchase from any other manufacturer.

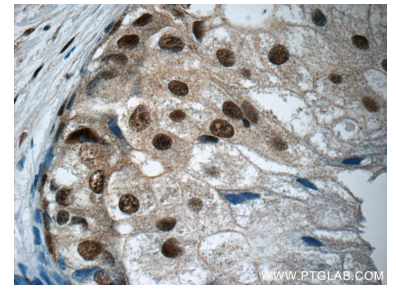
Selected Validation Data



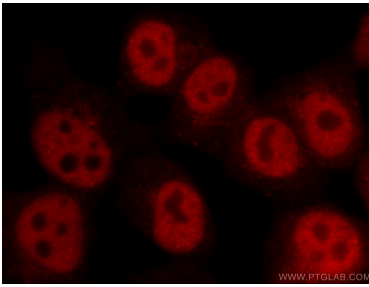
HeLa cells were subjected to SDS PAGE followed by western blot with 60088-1-Ig (IRF5 antibody) at dilution of 1:1000 incubated at room temperature for 1.5 hours.



IP result of anti-IRF5 (IP:60088-1-Ig, 4ug; Detection:60088-1-Ig 1:500) with HeLa cells lysate 1600ug.



Immunohistochemical analysis of paraffin-embedded human breast cancer tissue slide using 60088-1-Ig (IRF5 Antibody) at dilution of 1:50 (under 40x lens).



Immunofluorescent analysis of HepG2 cells using 60088-1-Ig (IRF5 antibody) at dilution of 1:50 and Rhodamine-Goat anti-Mouse IgG.