

For Research Use Only

ST2 Monoclonal antibody, PBS Only

Catalog Number: 60112-1-PBS



Basic Information

Catalog Number: 60112-1-PBS	GenBank Accession Number: BC030975	Purification Method: Protein A purification
Size: 1 mg/ml	GeneID (NCBI): 9173	CloneNo.: 7A2A7
Source: Mouse	UNIPROT ID: Q01638	
Isotype: IgG1	Full Name: interleukin 1 receptor-like 1	
Immunogen Catalog Number: AG2555	Calculated MW: 63 kDa, 37 kDa, 30 kDa	
	Observed MW: 63 kDa	

Applications

Tested Applications:
WB, IHC, ELISA

Species Specificity:
human, mouse, rat, pig

Background Information

ST2, also known as IL1RL1, is a member of the IL-1 superfamily and serves as the receptor for IL-33. It plays a major role in immune and inflammatory responses. ST2 is expressed by various types of immune cells including Th2 cells, mast cells, type 2 innate lymphoid cells, eosinophils, basophils, NK cells, and non-immune cells, including cardiomyocytes. Two forms of ST2 exist: a membrane-bound form and a soluble form (sST2). The membrane-bound form activates the MyD88/NF- κ B signaling pathway to enhance mast cell, Th2, regulatory T cell (Treg), and innate lymphoid cell type 2 functions. sST2 acts as a decoy receptor. (PMID: 27055914; 23999434; 28484466)

Storage

Storage:
Store at -80°C.

Storage Buffer:
PBS only

For technical support and original validation data for this product please contact:

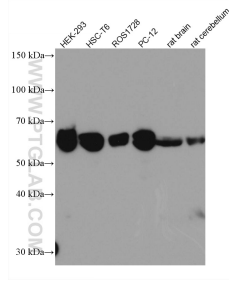
T: 4006900926

E: Proteintech-CN@ptglab.com

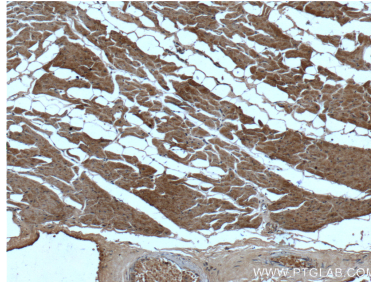
W: ptgcn.com

This product is exclusively available under Proteintech Group brand and is not available to purchase from any other manufacturer.

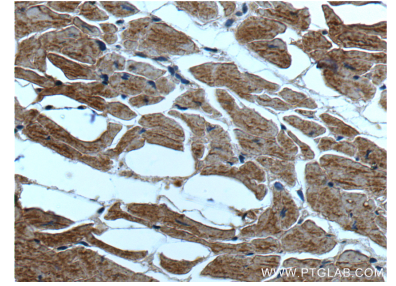
Selected Validation Data



Various lysates were subjected to SDS PAGE followed by western blot with 60112-1-Ig (ST2 antibody) at dilution of 1:10000 incubated at room temperature for 1.5 hours. This data was developed using the same antibody clone with 60112-1-PBS in a different storage buffer formulation.



Immunohistochemical analysis of paraffin-embedded human heart tissue slide using 60112-1-Ig (ST2 antibody at dilution of 1:200 (under 10x lens). This data was developed using the same antibody clone with 60112-1-PBS in a different storage buffer formulation.



Immunohistochemical analysis of paraffin-embedded human heart tissue slide using 60112-1-Ig (ST2 antibody at dilution of 1:200 (under 40x lens). This data was developed using the same antibody clone with 60112-1-PBS in a different storage buffer formulation.