

For Research Use Only

RABEP2 Monoclonal antibody, PBS Only



Catalog Number: 60125-1-PBS

Featured Product

Basic Information

Catalog Number:

60125-1-PBS

Size:

1 mg/ml

Source:

Mouse

Isotype:

IgG1

Immunogen Catalog Number:

AG6197

GenBank Accession Number:

BC058900

GeneID (NCBI):

79874

UNIPROT ID:

Q9H5N1

Full Name:

rabaptin, RAB GTPase binding effector protein 2

Calculated MW:

64 kDa

Observed MW:

62 kDa

Purification Method:

Protein A purification

CloneNo.:

1A4A4

Applications

Tested Applications:

WB, Indirect ELISA, IHC

Species Specificity:

human, rat, pig

Background Information

RABEP2, also named as RABPT5B, plays a role in membrane trafficking and in homotypic early endosome fusion. It has two isoforms with MW 59-63 kDa.

Storage

Storage:

Store at -80°C.

Storage Buffer:

PBS Only

For technical support and original validation data for this product please contact:

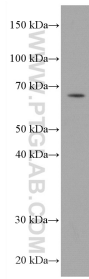
T: 4006900926

E: Proteintech-CN@ptglab.com

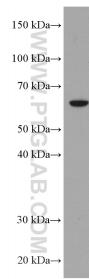
W: ptgcn.com

This product is exclusively available under Proteintech Group brand and is not available to purchase from any other manufacturer.

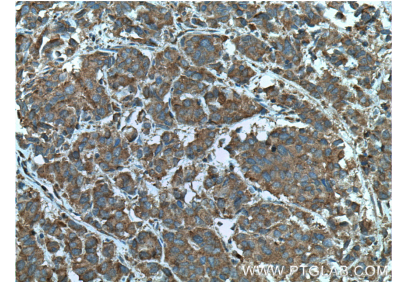
Selected Validation Data



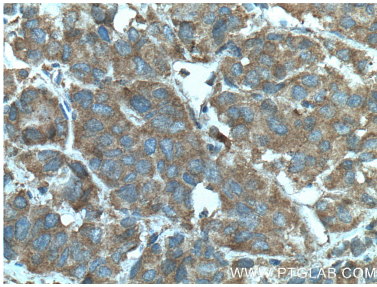
Jurkat cells were subjected to SDS PAGE followed by western blot with 60125-1-Ig (RABEP2 antibody) at dilution of 1:1000 incubated at room temperature for 1.5 hours. This data was developed using the same antibody clone with 60125-1-PBS in a different storage buffer formulation.



HSC-T6 cells were subjected to SDS PAGE followed by western blot with 60125-1-Ig (RABEP2 antibody) at dilution of 1:1000 incubated at room temperature for 1.5 hours. This data was developed using the same antibody clone with 60125-1-PBS in a different storage buffer formulation.



Immunohistochemical analysis of paraffin-embedded human prostate cancer tissue slide using 60125-1-Ig (RABEP2 antibody) at dilution of 1:100 (under 10x lens. Heat mediated antigen retrieval with Tris-EDTA buffer (pH 9.0). This data was developed using the same antibody clone with 60125-1-PBS in a different storage buffer formulation.



Immunohistochemical analysis of paraffin-embedded human prostate cancer tissue slide using 60125-1-Ig (RABEP2 antibody) at dilution of 1:100 (under 40x lens. Heat mediated antigen retrieval with Tris-EDTA buffer (pH 9.0). This data was developed using the same antibody clone with 60125-1-PBS in a different storage buffer formulation.