

EPHA1-specific Monoclonal antibody, PBS Only

Catalog Number: 60155-2-PBS

Basic Information

Catalog Number:

60155-2-PBS

Size:

1 mg/ml

Source:

Mouse

Isotype:

IgG1

GenBank Accession Number:

BC130291

GeneID (NCBI):

2041

UNIPROT ID:

P21709

Full Name:

EPH receptor A1

Calculated MW:

108 kDa

Observed MW:

108 kDa

Purification Method:

Caprylic acid/ammonium sulfate precipitation

CloneNo.:

1B7C3

Applications

Tested Applications:

WB, Indirect ELISA, IHC

Species Specificity:

human

Background Information

EPHA1, also named as EPH, EPHT and EPHT1, belongs to ephrin receptor subfamily of the protein-tyrosine kinase family. EPH and EPH-related receptors have been implicated in mediating developmental events, particularly in the nervous system. Receptors in the EPH subfamily typically have a single kinase domain and an extracellular region containing a Cys-rich domain and 2 fibronectin type III repeats. Ligands in the ephrin-A subclass, including the prototype family member ephrin-A1 (B61), are membrane associated through glycosylphosphatidyl-inositol linkages, whereas ephrin-B subclass consists of ligands with transmembrane domains. The general role of the Eph family is in mediating repulsive cell-cell interaction.

Storage

Storage:

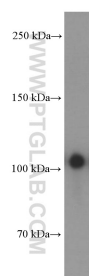
Store at -80°C.

The product is shipped with ice packs. Upon receipt, store it immediately at -80°C

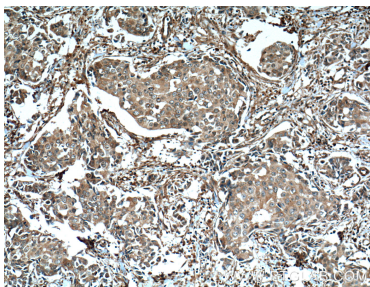
Storage Buffer:

PBS Only

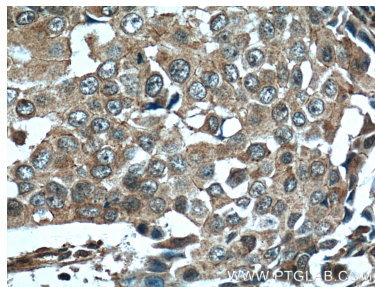
Selected Validation Data



HeLa cells were subjected to SDS PAGE followed by western blot with 60155-2-Ig (EPA1-specific antibody at dilution of 1:3000 incubated at room temperature for 1.5 hours. This data was developed using the same antibody clone with 60155-2-PBS in a different storage buffer formulation.



Immunohistochemical analysis of paraffin-embedded human breast cancer tissue slide using 60155-2-Ig (EPA1-specific antibody at dilution of 1:200 (under 10x lens). Heat mediated antigen retrieval with Tris-EDTA buffer (pH 9.0). This data was developed using the same antibody clone with 60155-2-PBS in a different storage buffer formulation.



Immunohistochemical analysis of paraffin-embedded human breast cancer tissue slide using 60155-2-Ig (EPA1-specific antibody at dilution of 1:200 (under 40x lens). Heat mediated antigen retrieval with Tris-EDTA buffer (pH 9.0). This data was developed using the same antibody clone with 60155-2-PBS in a different storage buffer formulation.