

For Research Use Only

# LCK Monoclonal antibody, PBS Only (Detector)

Catalog Number: 60162-3-PBS



## Basic Information

<b>Catalog Number:</b> 60162-3-PBS	<b>GenBank Accession Number:</b> BC013200	<b>Purification Method:</b> Protein G Magarose purification
<b>Size:</b> 1 mg/ml	<b>GeneID (NCBI):</b> 3932	<b>CloneNo.:</b> 3F12D9
<b>Source:</b> Mouse	<b>UNIPROT ID:</b> P06239	
<b>Isotype:</b> IgG1	<b>Full Name:</b> Lymphocyte-specific protein tyrosine kinase	
<b>Immunogen Catalog Number:</b> AG7694	<b>Calculated MW:</b> 539 aa, 56 kDa	

## Applications

**Tested Applications:**  
Cytometric bead array, Indirect ELISA

**Species Specificity:**  
human

## Background Information

### Storage

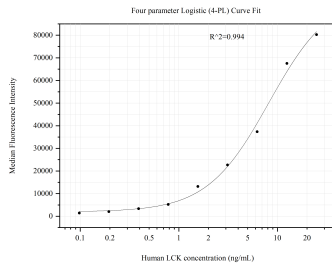
**Storage:**  
Store at -80°C.  
**The product is shipped with ice packs. Upon receipt, store it immediately at -80°C**

**Storage Buffer:**  
PBS Only

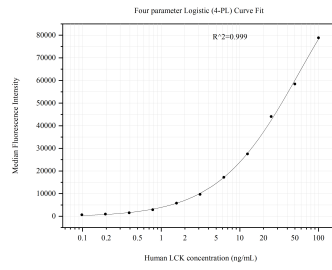
For technical support and original validation data for this product please contact:  
T: 4006900926      E: Proteintech-CN@ptglab.com      W: ptgcn.com

**This product is exclusively available under Proteintech Group brand and is not available to purchase from any other manufacturer.**

## Selected Validation Data



Cytometric bead array standard curve of MP51238-1, LCK Monoclonal Matched Antibody Pair, PBS Only. Capture antibody: 60162-1-PBS. Detection antibody: 60162-3-PBS. Standard:Ag7694. Range: 0.098-25 ng/mL



Cytometric bead array standard curve of MP51238-2, LCK Monoclonal Matched Antibody Pair, PBS Only. Capture antibody: 60162-4-PBS. Detection antibody: 60162-3-PBS. Standard:Ag7694. Range: 0.098-100 ng/mL