

For Research Use Only

# ACPP Monoclonal antibody, PBS Only



Catalog Number: 60176-1-PBS

## Basic Information

Catalog Number:

60176-1-PBS

Size:

1mg/ml

Source:

Mouse

Isotype:

IgG2a

Immunogen Catalog Number:

AG8578

GenBank Accession Number:

BC007460

GeneID (NCBI):

55

UNIPROT ID:

P15309

Full Name:

acid phosphatase, prostate

Calculated MW:

418 aa, 48 kDa

Observed MW:

45-50 kDa

Purification Method:

Protein A purification

CloneNo.:

1G2C9

## Applications

Tested Applications:

WB, IF, IHC, Indirect ELISA

Species Specificity:

human, rat

## Background Information

ACPP is also named as PAP (prostatic acid phosphatase), 5'-nucleotidase, thiamine monophosphatase and belongs to the histidine acid phosphatase family. This enzyme is a homodimeric glycoprotein with a subunit molecular mass of 50 kDa and is an androgen-stimulated secretory product of the human prostate gland (PMID:8132635). It is also a non-specific phosphatase and has been implicated in the progression of prostate cancer, which inactivates LPA in human seminal plasma (PMID:15280042). This protein has three glycosylation sites (PMID:10639192;12525165).

## Storage

Storage:

Store at -80°C.

Storage Buffer:

PBS Only

For technical support and original validation data for this product please contact:

T: 4006900926

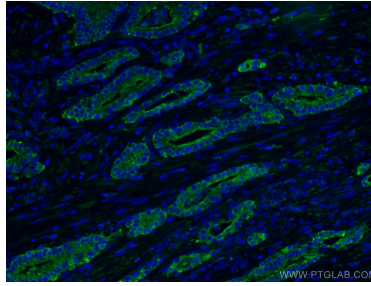
E: [Proteintech-CN@ptglab.com](mailto:Proteintech-CN@ptglab.com)

W: [ptgcn.com](http://ptgcn.com)

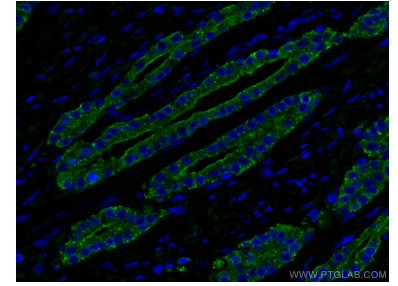
This product is exclusively available under Proteintech Group brand and is not available to purchase from any other manufacturer.

## Selected Validation Data

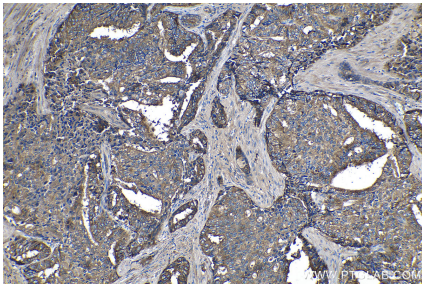
K-562 cells were subjected to SDS PAGE followed by western blot with 60176-1-Ig (ACPP Antibody) at dilution of 1:3000 incubated at room temperature for 1.5 hours. This data was developed using the same antibody clone with 60176-1-PBS in a different storage buffer formulation.



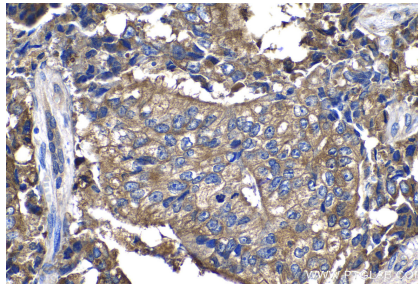
Immunofluorescent analysis of (4% PFA) fixed human prostate cancer tissue using ACPP antibody (60176-1-Ig, Clone: 1G2C9) at dilution of 1:400 and CoraLite®488-Conjugated AffiniPure Goat Anti-Mouse IgG(H+L). This data was developed using the same antibody clone with 60176-1-PBS in a different storage buffer formulation.



Immunofluorescent analysis of (4% PFA) fixed human prostate cancer tissue using ACPP antibody (60176-1-Ig, Clone: 1G2C9) at dilution of 1:400 and CoraLite®488-Conjugated AffiniPure Goat Anti-Mouse IgG(H+L). This data was developed using the same antibody clone with 60176-1-PBS in a different storage buffer formulation.



Immunohistochemical analysis of paraffin-embedded human prostate hyperplasia tissue slide using 60176-1-Ig (ACPP antibody) at dilution of 1:1000 (under 10x lens). This data was developed using the same antibody clone with 60176-1-PBS in a different storage buffer formulation.



Immunohistochemical analysis of paraffin-embedded human prostate hyperplasia tissue slide using 60176-1-Ig (ACPP antibody) at dilution of 1:1000 (under 40x lens). This data was developed using the same antibody clone with 60176-1-PBS in a different storage buffer formulation.