

CD138/Syndecan-1 Monoclonal antibody

Catalog Number: 60185-1-Ig

Basic Information

Catalog Number:

60185-1-Ig

Size:

500 µg/ml

Source:

Mouse

Isotype:

IgG1

Immunogen Catalog Number:

AG0823

GenBank Accession Number:

BC008765

GeneID (NCBI):

6382

UNIPROT ID:

P18827

Full Name:

syndecan 1

Calculated MW:

32.5 kDa

Observed MW:

120 kDa

Purification Method:

Protein G purification

CloneNo.:

1B6A2

Recommended Dilutions:

WB 1:200-1:1000

Applications

Tested Applications:

WB, ELISA

Species Specificity:

human

Positive Controls:

WB : BXP-3 cells,

Background Information

Syndecan-1 (SDC1), also named CD138, is an integral membrane protein. It participates in cell proliferation, cell migration and cell-matrix interactions via its receptor for extracellular matrix proteins. It is a heparan sulfate proteoglycan expressed on the surface of, and actively shed by, myeloma cells. Altered syndecan-1 expression has been detected in several different tumor types. SDC1 was regarded as a useful marker for labeling normal and neoplastic plasma cells and plasmacytoid lymphomas.

Storage

Storage:

Store at -20°C. Stable for one year after shipment.

Storage Buffer:

PBS with 0.02% sodium azide and 50% glycerol pH 7.3.

Aliquoting is unnecessary for -20°C storage

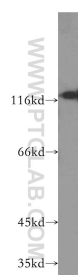
For technical support and original validation data for this product please contact:

T: 4006900926

E: Proteintech-CN@ptglab.comW: ptgcn.com

This product is exclusively available under Proteintech Group brand and is not available to purchase from any other manufacturer.

Selected Validation Data



BxPC-3 cells were subjected to SDS PAGE followed by western blot with 60185-1-Ig (CD138/Syndecan-1 antibody) at dilution of 1:400 incubated at room temperature for 1.5 hours.