

For Research Use Only

ESR2 Monoclonal antibody, PBS Only



Catalog Number: 60197-1-PBS

Featured Product

Basic Information

Catalog Number:

60197-1-PBS

Size:

1 mg/ml

Source:

Mouse

Isotype:

IgG1

Immunogen Catalog Number:

AG5103

GenBank Accession Number:

BC024181

GeneID (NCBI):

2100

UNIPROT ID:

Q92731

Full Name:

estrogen receptor 2 (ER beta)

Calculated MW:

59 kDa

Observed MW:

50-60 kDa

Purification Method:

Protein G purification

CloneNo.:

5D2C9

Applications

Tested Applications:

WB, Indirect ELISA

Species Specificity:

human

Background Information

Estrogen receptor-beta (ESR2) is a member of the superfamily of nuclear receptors, which can transduce extracellular signals into transcriptional responses. It binds estrogens with an affinity similar to that of ESR1, and activates expression of reporter genes containing estrogen response elements (ERE) in an estrogen-dependent manner. DNA-binding by ESR1 and ESR2 is rapidly lost at 37 degrees Celsius in the absence of ligand while in the presence of 17 beta-estradiol and 4-hydroxy-tamoxifen loss in DNA-binding at elevated temperature is more gradual. ESR2 exists various isoform and range of calculated molecular weight of isoforms is 50-60 kDa. The experiment detected two bands for ESR2 in isolated human germ cells, one at 60 kDa and a weaker one at 50 kDa (PMID: 14766008).

Storage

Storage:

Store at -80°C.

Storage Buffer:

PBS Only

For technical support and original validation data for this product please contact:

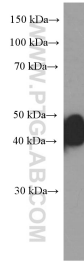
T: 4006900926

E: Proteintech-CN@ptglab.com

W: ptgcn.com

This product is exclusively available under Proteintech Group brand and is not available to purchase from any other manufacturer.

Selected Validation Data



MCF-7 cells were subjected to SDS PAGE followed by western blot with 60197-1-Ig (ESR2 Antibody) at dilution of 1:2000 incubated at room temperature for 1.5 hours. This data was developed using the same antibody clone with 60197-1-PBS in a different storage buffer formulation.