

For Research Use Only

STAT3 Monoclonal antibody, PBS Only



Catalog Number: 60199-1-PBS

Featured Product

Basic Information

Catalog Number:

60199-1-PBS

Size:

1mg/ml

Source:

Mouse

Isotype:

IgG2a

Immunogen Catalog Number:

AG0360

GenBank Accession Number:

BC000627

GeneID (NCBI):

6774

UNIPROT ID:

P40763

Full Name:

signal transducer and activator of transcription 3 (acute-phase response factor)

Calculated MW:

770 aa, 88 kDa

Observed MW:

70-88 kDa

Purification Method:

Protein A purification

CloneNo.:

3G2D12

Applications

Tested Applications:

WB, IP, IF, IHC, Indirect ELISA

Species Specificity:

human, rat

Background Information

Signal transducer and activator of transcription 3 (acute-phase response factor) (STAT3, synonyms: APRF, FLJ20882, MGC16063) is a member of the STAT protein family. In response to cytokines and growth factors, STAT family members are phosphorylated by the receptor associated kinases, and then form homo- or heterodimers that translocate to the cell nucleus where they act as transcription activators. STAT3 is activated through phosphorylation in response to various cytokines and growth factors including IFNs, EGF, ILS, IL6, HGF, LIF and BMP2. STAT3 mediates the expression of a variety of genes in response to cell stimuli, and thus plays a key role in many cellular processes such as cell growth and apoptosis. The small GTPase Rac1 has been shown to bind and regulate the activity of STAT3. This antibody is a mouse monoclonal antibody raised against residues near the N terminus of human STAT3. STAT3 exists three isoforms and the molecular weight of each isoform respectively is 83 kDa, 87 kDa and 88 kDa.

Storage

Storage:

Store at -80°C.

Storage Buffer:

PBS Only

For technical support and original validation data for this product please contact:

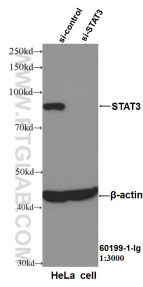
T: 4006900926

E: Proteintech-CN@ptglab.com

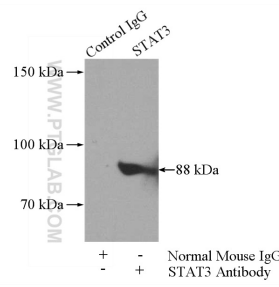
W: ptgcn.com

This product is exclusively available under Proteintech Group brand and is not available to purchase from any other manufacturer.

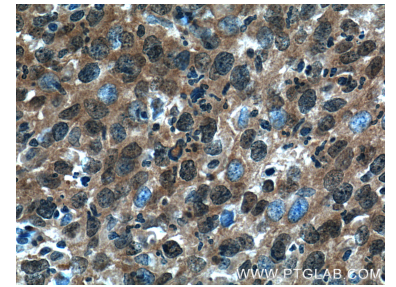
Selected Validation Data



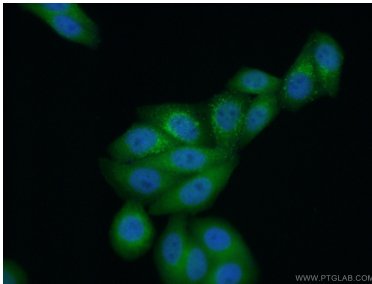
WB result of STAT3 antibody (60199-1-Ig, 1:3000) with si-Control and si-STAT3 transfected HeLa cells. This data was developed using the same antibody clone with 60199-1-PBS in a different storage buffer formulation.



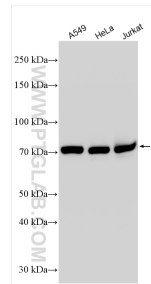
IP result of anti-STAT3 (IP:60199-1-Ig, 5ug; Detection:60199-1-Ig 1:2000) with HeLa cells lysate 1400ug. This data was developed using the same antibody clone with 60199-1-PBS in a different storage buffer formulation.



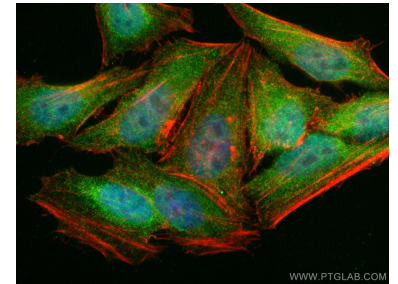
Immunohistochemical analysis of paraffin-embedded human cervical cancer tissue slide using 60199-1-Ig (STAT3 Antibody) at dilution of 1:400 (under 40x lens). Heat mediated antigen retrieval with Tris-EDTA buffer (pH 9.0). This data was developed using the same antibody clone with 60199-1-PBS in a different storage buffer formulation.



Immunofluorescent analysis of (10% Formaldehyde) fixed HepG2 cells using 60199-1-Ig(STAT3 antibody) at dilution of 1:100 and Alexa Fluor 488-conjugated AffiniPure Goat Anti-Mouse IgG(H+L). This data was developed using the same antibody clone with 60199-1-PBS in a different storage buffer formulation.



Various lysates were subjected to SDS PAGE followed by western blot with 60199-1-Ig (STAT3 antibody) at dilution of 1:3000 incubated at room temperature for 1.5 hours. This data was developed using the same antibody clone with 60199-1-PBS in a different storage buffer formulation.



Immunofluorescent analysis of (4% PFA) fixed HepG2 cells using STAT3 antibody (60199-1-Ig, Clone: 3G2D12) at dilution of 1:400 and Coralite@488-Conjugated AffiniPure Goat Anti-Mouse IgG(H+L), CL594-phalloidin (red). This data was developed using the same antibody clone with 60199-1-PBS in a different storage buffer formulation.