

For Research Use Only

# CD23 Monoclonal antibody, PBS Only (Capture/Detector)



Catalog Number: 60208-1-PBS

## Basic Information

Catalog Number:

60208-1-PBS

Size:

1mg/ml

Source:

Mouse

Isotype:

IgG1

Immunogen Catalog Number:

AG0425

GenBank Accession Number:

BC064417

GeneID (NCBI):

2208

UNIPROT ID:

P06734

Full Name:

Fc fragment of IgE, low affinity II,  
receptor for (CD23)

Calculated MW:

321 aa, 36 kDa

Observed MW:

38 kDa

Purification Method:

Protein G purification

CloneNo.:

3H6B8

## Applications

Tested Applications:

WB, IF, IHC, Indirect ELISA, Cytometric bead array

Species Specificity:

human, mouse

## Background Information

CD23, also known as low affinity immunoglobulin epsilon Fc receptor, is a transmembrane glycoprotein present on a subpopulation of B lymphocytes in germinal centres, EBV-transformed B-lymphoblastoid cell lines, follicular dendritic cells, and a subpopulation of peripheral blood cells. CD23 has essential roles in the regulation of IgE production and in the differentiation of B-cells.

## Storage

Storage:

Store at -80°C.

Storage Buffer:

PBS Only

For technical support and original validation data for this product please contact:

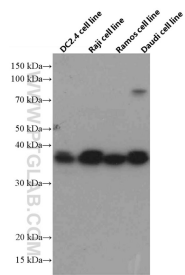
T: 4006900926

E: [Proteintech-CN@ptglab.com](mailto:Proteintech-CN@ptglab.com)

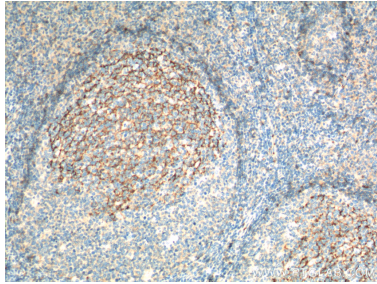
W: [ptgcn.com](http://ptgcn.com)

This product is exclusively available under Proteintech Group brand and is not available to purchase from any other manufacturer.

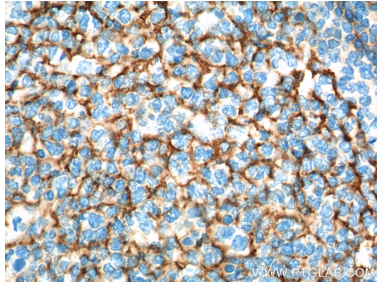
Selected Validation Data



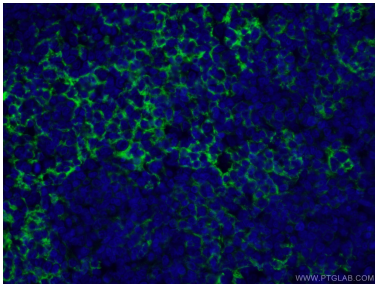
DC2.4, Raji, Ramos and Daudi cells were subjected to SDS PAGE followed by western blot with 60208-1-Ig (CD23 antibody) at dilution of 1:4000 incubated at room temperature for 1.5 hours. This data was developed using the same antibody clone with 60208-1-PBS in a different storage buffer formulation.



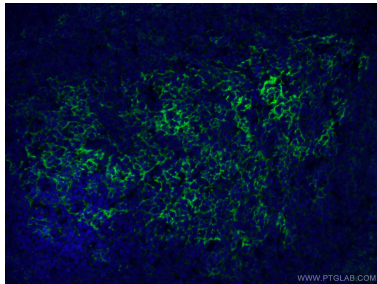
Immunohistochemical analysis of paraffin-embedded human tonsillitis tissue slide using 60208-1-Ig (CD23 antibody at dilution of 1:200 (under 10x lens). Heat mediated antigen retrieval with Tris-EDTA buffer (pH 9.0). This data was developed using the same antibody clone with 60208-1-PBS in a different storage buffer formulation.



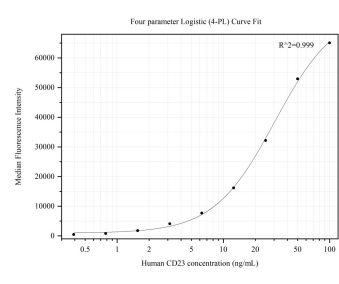
Immunohistochemical analysis of paraffin-embedded human tonsillitis tissue slide using 60208-1-Ig (CD23 antibody at dilution of 1:200 (under 40x lens). Heat mediated antigen retrieval with Tris-EDTA buffer (pH 9.0). This data was developed using the same antibody clone with 60208-1-PBS in a different storage buffer formulation.



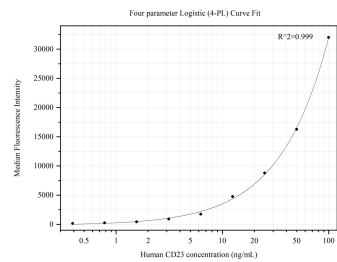
Immunofluorescent analysis of (4% PFA) fixed human tonsillitis tissue using 60208-1-Ig (CD23 antibody) at dilution of 1:100 and Alexa Fluor 488-conjugated AffiniPure Goat Anti-Mouse IgG(H+L). This data was developed using the same antibody clone with 60208-1-PBS in a different storage buffer formulation.



Immunofluorescent analysis of (4% PFA) fixed human tonsillitis tissue using 60208-1-Ig (CD23 antibody) at dilution of 1:100 and Alexa Fluor 488-conjugated AffiniPure Goat Anti-Mouse IgG(H+L). This data was developed using the same antibody clone with 60208-1-PBS in a different storage buffer formulation.



Cytometric bead array standard curve of MP50220-3, CD23, FCER2 Monoclonal Matched Antibody Pair, PBS Only. Capture antibody: 60208-2-PBS. Detection antibody: 60208-1-PBS. Standard: Ag0425. Range: 0.391-100 ng/mL.



Cytometric bead array standard curve of MP50220-4, CD23, FCER2 Monoclonal Matched Antibody Pair, PBS Only. Capture antibody: 60208-1-PBS. Detection antibody: 60208-4-PBS. Standard: Ag0425. Range: 0.391-100 ng/mL.