

For Research Use Only

# CD23,FCER2 Monoclonal antibody, PBS Only (Detector)



Catalog Number:60208-4-PBS

## Basic Information

<b>Catalog Number:</b> 60208-4-PBS	<b>GenBank Accession Number:</b> BC064417	<b>Purification Method:</b> Protein G Magarose purification
<b>Size:</b> 1 mg/ml	<b>GeneID (NCBI):</b> 2208	<b>CloneNo.:</b> 4G1D9
<b>Source:</b> Mouse	<b>UNIPROT ID:</b> P06734	
<b>Isotype:</b> IgG1	<b>Full Name:</b> Fc fragment of IgE, low affinity II, receptor for (CD23)	
<b>Immunogen Catalog Number:</b> AG0425	<b>Calculated MW:</b> 321 aa, 36 kDa	

## Applications

**Tested Applications:**  
Indirect ELISA, Cytometric bead array

**Species Specificity:**  
Human

## Background Information

### Storage

**Storage:**  
Store at -80°C.  
**Storage Buffer:**  
PBS Only

For technical support and original validation data for this product please contact:

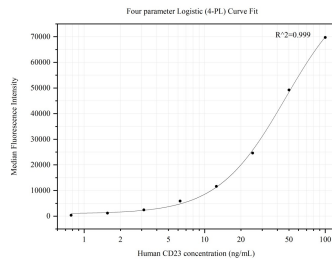
T: 4006900926

E: [Proteintech-CN@ptglab.com](mailto:Proteintech-CN@ptglab.com)

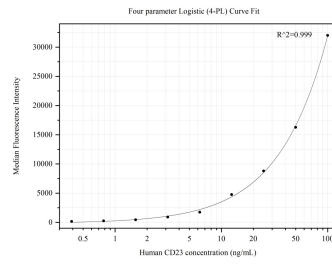
W: [ptgcn.com](http://ptgcn.com)

This product is exclusively available under Proteintech Group brand and is not available to purchase from any other manufacturer.

## Selected Validation Data



Cytometric bead array standard curve of MP50220-2, CD23,FCER2 Monoclonal Matched Antibody Pair, PBS Only. Capture antibody: 60208-2-PBS. Detection antibody: 60208-4-PBS. Standard:Ag0425. Range: 0.781-100 ng/mL



Cytometric bead array standard curve of MP50220-4, CD23,FCER2 Monoclonal Matched Antibody Pair, PBS Only. Capture antibody: 60208-1-PBS. Detection antibody: 60208-4-PBS. Standard:Ag0425. Range: 0.391-100 ng/mL