

For Research Use Only

transgelin/SM22 Monoclonal antibody

Catalog Number: 60213-1-Ig

19 Publications



Basic Information

Catalog Number:

60213-1-Ig

Concentration:

1000 ug/ml

Source:

Mouse

Isotype:

IgG1

Immunogen Catalog Number:

AG0764

GenBank Accession Number:

BC004927

GeneID (NCBI):

6876

UNIPROT ID:

Q01995

Full Name:

transgelin

Calculated MW:

22 kDa

Observed MW:

18+22 kDa

Purification Method:

Protein G purification

CloneNo.:

2A10C2

Recommended Dilutions:

WB 1:5000-1:50000

IHC 1:50-1:400

IF-P 1:500-1:2000

Applications

Tested Applications:

WB, IHC, IF-P, ELISA

Cited Applications:

WB, IF

Species Specificity:

human, mouse, rat, pig

Cited Species:

human, mouse, rat

Note-IHC: suggested antigen retrieval with TE buffer pH 9.0; (*) Alternatively, antigen retrieval may be performed with citrate buffer pH 6.0

Positive Controls:

WB : pig colon tissue, human colon tissue, pig stomach tissue, human stomach tissue, rat colon tissue, rat stomach tissue, rabbit stomach tissue, mouse colon tissue

IHC : human colon tissue, human heart tissue

IF-P : mouse heart tissue,

Background Information

The transgelin family is a group of proteins that belong to 22 kDa actin-related corpnin superfamily. Of all three isoforms, transgelin 1 is the best characterized. Transgelin 1, also known as SM22 alpha, is a specific marker for differentiated smooth muscle cells. Transgelin 2, also known as SM22 beta, is expressed by both smooth muscle and non-smooth muscle cells in a temporally and spatially regulated pattern. Transgelin 3, also known as NP25, is only found in highly differentiated neuronal cells.

Notable Publications

Author	Pubmed ID	Journal	Application
Ji-Ting Liu	34604241	Front Cell Dev Biol	WB
Sarah Lang	29152087	Oncotarget	WB
Lin Liu	36309970	Clin Exp Pharmacol Physiol	WB

Storage

Storage:

Store at -20°C. Stable for one year after shipment.

Storage Buffer:

PBS with 0.02% sodium azide and 50% glycerol, pH7.3

Aliquoting is unnecessary for -20°C storage

For technical support and original validation data for this product please contact:

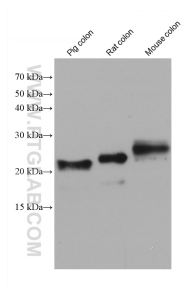
T: 4006900926

E: Proteintech-CN@ptglab.com

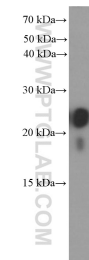
W: ptgcn.com

This product is exclusively available under Proteintech Group brand and is not available to purchase from any other manufacturer.

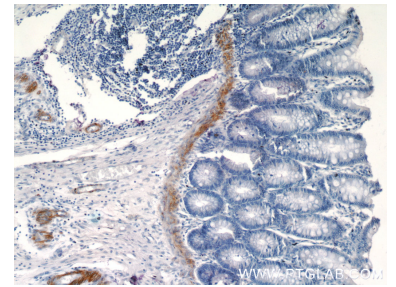
Selected Validation Data



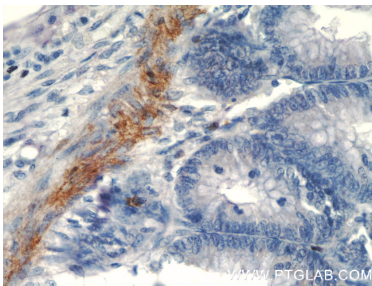
Various lysates were subjected to SDS PAGE followed by western blot with 60213-1-Ig (transgelin/SM22 antibody) at dilution of 1:20000 incubated at room temperature for 1.5 hours.



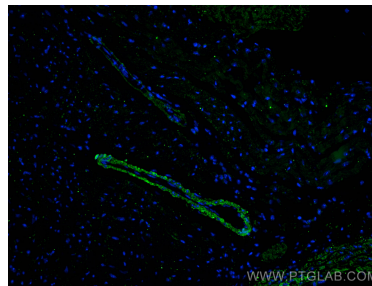
human colon tissue were subjected to SDS PAGE followed by western blot with 60213-1-Ig (transgelin/SM22 antibody at dilution of 1:4000 incubated at room temperature for 1.5 hours.



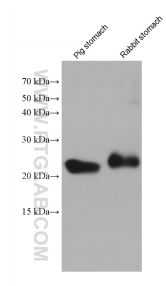
Immunohistochemical analysis of paraffin-embedded human colon tissue slide using 60213-1-Ig (transgelin/SM22 antibody at dilution of 1:200 (under 10x lens).



Immunohistochemical analysis of paraffin-embedded human colon tissue slide using 60213-1-Ig (transgelin/SM22 antibody at dilution of 1:200 (under 40x lens).



Immunofluorescent analysis of (4% PFA) fixed paraffin-embedded mouse heart tissue using transgelin/SM22 antibody (60213-1-Ig, Clone: 2A10C2) at dilution of 1:1000 and CoraLite®488-Conjugated AffiniPure Goat Anti-Mouse IgG(H+L). Heat mediated antigen retrieval with Tris-EDTA buffer (pH 9.0).



Various lysates were subjected to SDS PAGE followed by western blot with 60213-1-Ig (transgelin/SM22 antibody) at dilution of 1:20000 incubated at room temperature for 1.5 hours.