

For Research Use Only

COTL1 Monoclonal antibody

Catalog Number: 60237-1-Ig **Featured Product**



Basic Information

Catalog Number: 60237-1-Ig	GenBank Accession Number: BC010884	Purification Method: Protein G purification
Size: 500 µg/ml	GeneID (NCBI): 23406	CloneNo.: 4A3D9
Source: Mouse	UNIPROT ID: Q14019	Recommended Dilutions: WB 1:2000-1:10000 IHC 1:500-1:2000 IF/ICC 1:200-1:800
Isotype: IgG1	Full Name: coactosin-like 1 (Dictyostelium)	
Immunogen Catalog Number: AG1230	Calculated MW: 16 kDa	
	Observed MW: 14-16 kDa	

Applications

Tested Applications:
IF/ICC, IHC, WB, ELISA

Species Specificity:
human, mouse

Note-IHC: suggested antigen retrieval with TE buffer pH 9.0; (*) Alternatively, antigen retrieval may be performed with citrate buffer pH 6.0

Positive Controls:

WB: A431 cells, fetal human brain tissue, human peripheral blood platelets, HeLa cells

IHC: human lung cancer tissue,

IF/ICC: HepG2 cells,

Background Information

COTL1, also named as CLP, binds to F-actin in a calcium-independent manner. And it has no direct effect on actin depolymerization.

Storage

Storage:

Store at -20°C. Stable for one year after shipment.

Storage Buffer:

PBS with 0.02% sodium azide and 50% glycerol pH 7.3.

Aliquoting is unnecessary for -20°C storage

For technical support and original validation data for this product please contact:

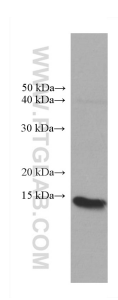
T: 4006900926

E: Proteintech-CN@ptglab.com

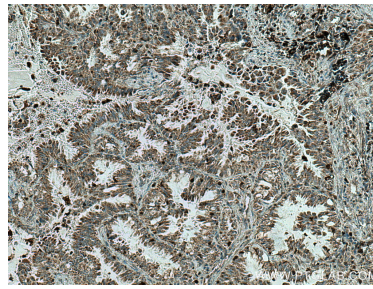
W: ptgcn.com

This product is exclusively available under Proteintech Group brand and is not available to purchase from any other manufacturer.

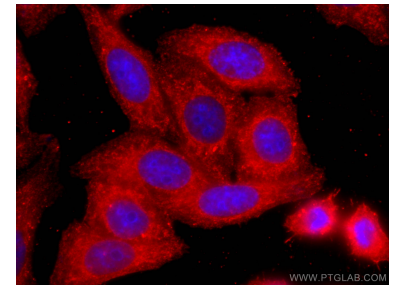
Selected Validation Data



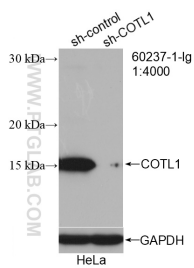
A431 cells were subjected to SDS PAGE followed by western blot with 60237-1-Ig (COTL1 antibody) at dilution of 1:5000 incubated at room temperature for 1.5 hours.



Immunohistochemical analysis of paraffin-embedded human lung cancer tissue slide using 60237-1-Ig (COTL1 antibody) at dilution of 1:1000 (under 10x lens). Heat mediated antigen retrieval with Tris-EDTA buffer (pH 9.0).



Immunofluorescent analysis of (-20°C Ethanol) fixed HepG2 cells using COTL1 antibody (60237-1-Ig, Clone: 4A3D9) at dilution of 1:400 and CoraLite®594-Conjugated AffiniPure Goat Anti-Mouse IgG(H+L).



WB result of COTL1 antibody (60237-1-Ig; 1:4000; incubated at room temperature for 1.5 hours) with sh-Control and sh-COTL1 transfected HeLa cells.