

For Research Use Only

p504S,AMACR Monoclonal antibody, PBS Only (Capture/Detector)



Catalog Number:60240-3-PBS

Basic Information

Catalog Number: 60240-3-PBS	GenBank Accession Number: BC009471	Purification Method: Protein G Magarose purification
Size: 1 mg/ml	GeneID (NCBI): 23600	CloneNo.: 5F5D6
Source: Mouse	UNIPROT ID: Q9UHK6	
Isotype: IgG1	Full Name: alpha-methylacyl-CoA racemase	
Immunogen Catalog Number: AG8720	Calculated MW: 382 aa, 42 kDa	

Applications

Tested Applications:
Cytometric bead array, Indirect ELISA

Species Specificity:
human

Background Information

Storage

Storage:
Store at -80°C.
The product is shipped with ice packs. Upon receipt, store it immediately at -80°C

Storage Buffer:
PBS Only

For technical support and original validation data for this product please contact:

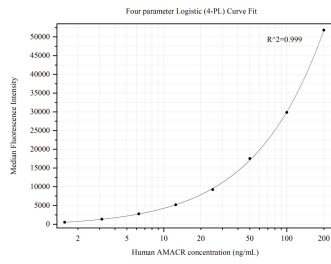
T: 4006900926

E: Proteintech-CN@ptglab.com

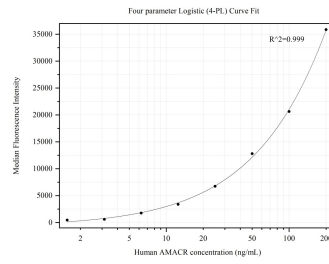
W: ptgcn.com

This product is exclusively available under Proteintech Group brand and is not available to purchase from any other manufacturer.

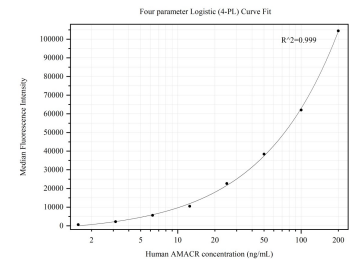
Selected Validation Data



Cytometric bead array standard curve of MP50263-1, p504S,AMACR Monoclonal Matched Antibody Pair, PBS Only. Capture antibody: 60240-2-PBS. Detection antibody: 60240-3-PBS. Standard:Ag8720. Range: 1.563-200 ng/mL



Cytometric bead array standard curve of MP50263-2, p504S,AMACR Monoclonal Matched Antibody Pair, PBS Only. Capture antibody: 60240-3-PBS. Detection antibody: 60240-4-PBS. Standard:Ag8720. Range: 1.563-200 ng/mL



Cytometric bead array standard curve of MP50263-3, p504S,AMACR Monoclonal Matched Antibody Pair, PBS Only. Capture antibody: 60240-5-PBS. Detection antibody: 60240-3-PBS. Standard:Ag8720. Range: 1.563-200 ng/mL