

For Research Use Only

# CDX2 Monoclonal antibody, PBS Only (Capture)

Catalog Number: 60243-1-PBS

Featured Product



## Basic Information

Catalog Number:

60243-1-PBS

Size:

1mg/ml

Source:

Mouse

Isotype:

IgG1

Immunogen Catalog Number:

AG17644

GenBank Accession Number:

BC014461

GeneID (NCBI):

1045

UNIPROT ID:

Q99626

Full Name:

caudal type homeobox 2

Calculated MW:

313 aa, 34 kDa

Observed MW:

33-40 kDa

Purification Method:

Protein A purification

CloneNo.:

5A4E6

## Applications

Tested Applications:

WB, IF/ICC, Cytometric bead array, Indirect ELISA

Species Specificity:

human, pig

## Background Information

CDX2, also named as Homeobox protein CDX-2, is a 313 amino acid protein, which contains one homeobox DNA-binding domain and belongs to the Caudal homeobox family. CDX2 localizes in the nucleus and is involved in the transcriptional regulation of multiple genes expression in the intestinal epithelium. The relative expression of CDX1 to CDX2 protein may be important in the anterior to posterior patterning of the intestinal epithelium and in defining patterns of proliferation and differentiation along the crypt-villus axis. Both Cdx1 and Cdx2 genes must be expressed to reduce tumorigenic potential, to increase sensitivity to apoptosis, and to reduce cell migration, suggesting that the two genes control the normal phenotype by independent pathways.

## Storage

Storage:

Store at -80°C.

The product is shipped with ice packs. Upon receipt, store it immediately at -80°C

Storage Buffer:

PBS Only

For technical support and original validation data for this product please contact:

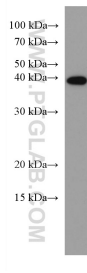
T: 4006900926

E: [Proteintech-CN@ptglab.com](mailto:Proteintech-CN@ptglab.com)

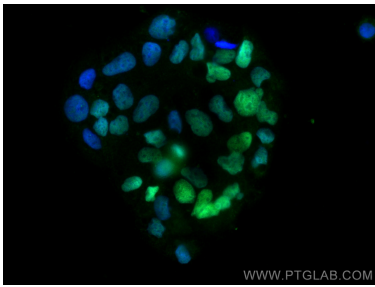
W: [ptgcn.com](http://ptgcn.com)

This product is exclusively available under Proteintech Group brand and is not available to purchase from any other manufacturer.

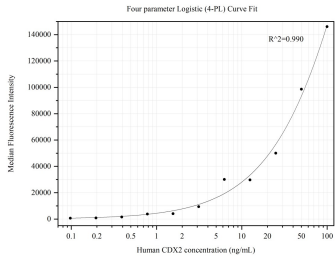
Selected Validation Data



COLO 320 cells were subjected to SDS PAGE followed by western blot with 60243-1-Ig (CDX2 antibody) at dilution of 1:3000 incubated at room temperature for 1.5 hours. This data was developed using the same antibody clone with 60243-1-PBS in a different storage buffer formulation.



Immunofluorescent analysis of (4% PFA) fixed Caco-2 cells using CDX2 antibody (60243-1-Ig, Clone: 5A4E6 ) at dilution of 1:800 and CoraLite®488-Conjugated AffiniPure Goat Anti-Mouse IgG(H+L). This data was developed using the same antibody clone with 60243-1-PBS in a different storage buffer formulation.



Cytometric bead array standard curve of MP50121-1, CDX2 Monoclonal Matched Antibody Pair, PBS Only. Capture antibody: 60243-1-PBS. Detection antibody: 60243-3-PBS. Standard:Ag17644. Range: 0.098-100 ng/mL