

For Research Use Only

# PLAA Monoclonal antibody, PBS Only



Catalog Number: 60244-1-PBS

Featured Product

## Basic Information

Catalog Number:

60244-1-PBS

Size:

1 mg/ml

Source:

Mouse

Isotype:

IgG1

Immunogen Catalog Number:

AG3224

GenBank Accession Number:

BC032551

GeneID (NCBI):

9373

UNIPROT ID:

Q9Y263

Full Name:

phospholipase A2-activating protein

Calculated MW:

738 aa, 81 kDa

Observed MW:

75-80 kDa

Purification Method:

Protein A purification

CloneNo.:

5C10G9

## Applications

Tested Applications:

WB, Indirect ELISA, IHC

Species Specificity:

human, mouse, rat

## Background Information

Phospholipase A-2-activating protein (PLAA), also named PLAP, can interact with ubiquitin and is involved in the maintenance of ubiquitin levels. PLAA contains multiple consensus domains including WD repeats, PFU domain and PUL domain. Although the function of PLAA remains unclear, ubiquitin binding of PLAA might be the central role that connects ubiquitination and degradation in ERAD. Recent finding revealed that PLAA served as a novel nociceptive mediator after incision, and its expression level is regulated by miR-203.

## Storage

Storage:

Store at -80°C.

**The product is shipped with ice packs. Upon receipt, store it immediately at -80°C**

Storage Buffer:

PBS Only

For technical support and original validation data for this product please contact:

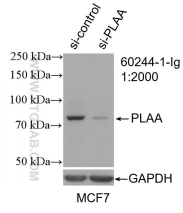
T: 4006900926

E: Proteintech-CN@ptglab.com

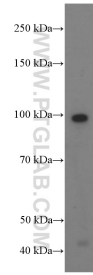
W: ptgcn.com

**This product is exclusively available under Proteintech Group brand and is not available to purchase from any other manufacturer.**

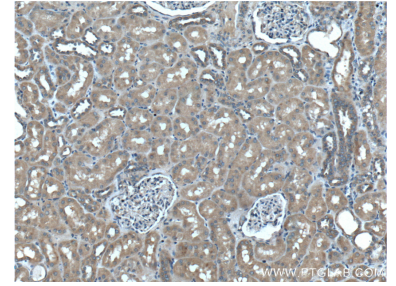
## Selected Validation Data



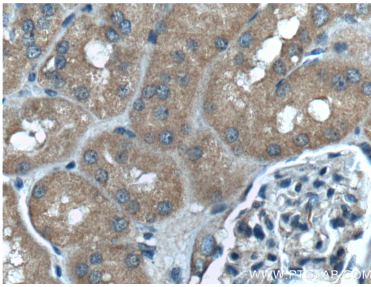
WB result of PLAA antibody (60244-1-Ig; 1:2000; incubated at room temperature for 1.5 hours) with sh-Control and sh-PLAA transfected MCF-7 cells. This data was developed using the same antibody clone with 60244-1-PBS in a different storage buffer formulation.



ROS1728 cells were subjected to SDS PAGE followed by western blot with 60244-1-Ig (PLAA Antibody) at dilution of 1:1000 incubated at room temperature for 1.5 hours. This data was developed using the same antibody clone with 60244-1-PBS in a different storage buffer formulation.



Immunohistochemical analysis of paraffin-embedded human kidney tissue slide using 60244-1-Ig (PLAA Antibody) at dilution of 1:200 (under 10x lens). This data was developed using the same antibody clone with 60244-1-PBS in a different storage buffer formulation.



Immunohistochemical analysis of paraffin-embedded human kidney tissue slide using 60244-1-Ig (PLAA Antibody) at dilution of 1:200 (under 40x lens). This data was developed using the same antibody clone with 60244-1-PBS in a different storage buffer formulation.