

For Research Use Only

# PKM2-specific Monoclonal antibody, PBS Only



Catalog Number: 60268-1-PBS

Featured Product

## Basic Information

Catalog Number:

60268-1-PBS

Size:

1 mg/ml

Source:

Mouse

Isotype:

IgG1

GenBank Accession Number:

NM\_002654

GeneID (NCBI):

5315

UNIPROT ID:

P14618

Full Name:

PKM pyruvate kinase, muscle

Calculated MW:

58 kDa

Observed MW:

58 kDa

Purification Method:

Protein G purification

CloneNo.:

1C11C7

## Applications

Tested Applications:

WB, IP, IF, IHC, ELISA

Species Specificity:

human, mouse, rat

## Background Information

PKM, also named as OIP3, PK2, PK3, PKM, p58, THBP1, CTHBP and Tumor M2-PK, belongs to the pyruvate kinase family. It is glycolytic enzyme that catalyzes the transfer of a phosphoryl group from phosphoenolpyruvate (PEP) to ADP, generating ATP. It stimulates POU5F1-mediated transcriptional activation. PKM plays a general role in caspase independent cell death of tumor cells. PKM has 2 isoforms, the activity of the M2 isoform can be inhibited by tyrosine kinase signalling in tumour cells. The immunogen of this antibody is M2 isoform and this antibody is specific to PKM2 isoform.

## Storage

Storage:

Store at -80°C.

Storage Buffer:

PBS only

For technical support and original validation data for this product please contact:

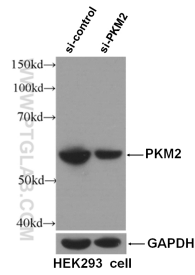
T: 4006900926

E: [Proteintech-CN@ptglab.com](mailto:Proteintech-CN@ptglab.com)

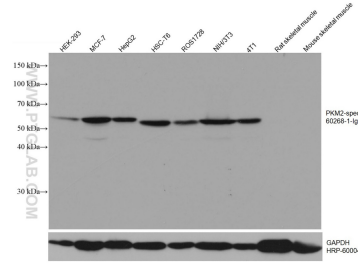
W: [ptgcn.com](http://ptgcn.com)

This product is exclusively available under Proteintech Group brand and is not available to purchase from any other manufacturer.

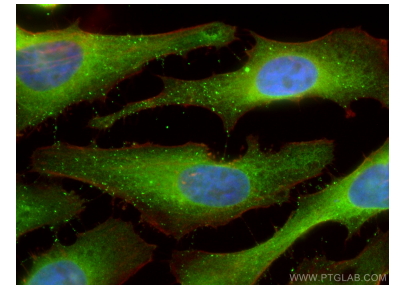
## Selected Validation Data



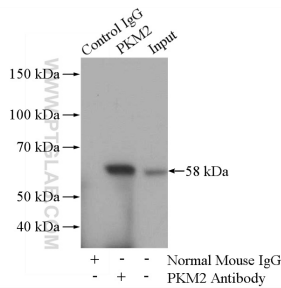
WB result of PKM2 antibody (60268-1-Ig, 1:3000) with si-Control and si-PKM2 transfected HEK293 cells. This data was developed using the same antibody clone with 60268-1-PBS in a different storage buffer formulation.



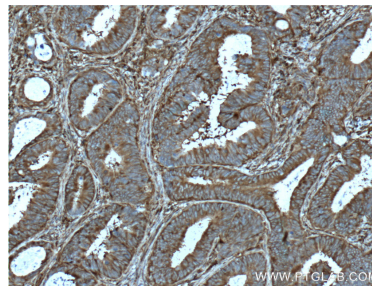
Various lysates were subjected to SDS PAGE followed by western blot with 60268-1-Ig (PKM2-specific antibody) at dilution of 1:20000 incubated at room temperature for 1.5 hours. The membrane was stripped and reblotted with HRP-conjugated GAPDH Monoclonal antibody (HRP-60004) as loading control. This data was developed using the same antibody clone with 60268-1-PBS in a different storage buffer formulation.



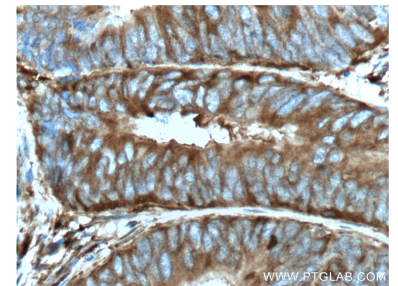
Immunofluorescent analysis of (4% PFA) fixed HeLa cells using PKM2-specific antibody (60268-1-Ig, Clone: 1C11C7) at dilution of 1:400 and CoraLite@488-Conjugated AffiniPure Goat Anti-Mouse IgG(H+L), CL594-Phalloidin (red). This data was developed using the same antibody clone with 60268-1-PBS in a different storage buffer formulation.



IP result of anti-PKM2-specific (IP:60268-1-Ig, 5ug; Detection:15822-1-AP (PKM2-specific rabbit poly-antibody), 1:300) with HeLa cells lysate 2800ug. This data was developed using the same antibody clone with 60268-1-PBS in a different storage buffer formulation.



Immunohistochemical analysis of paraffin-embedded human colon cancer tissue slide using 60268-1-Ig (PKM2-specific antibody) at dilution of 1:500 (under 10x lens). Heat mediated antigen retrieval with Tris-EDTA buffer (pH 9.0). This data was developed using the same antibody clone with 60268-1-PBS in a different storage buffer formulation.



Immunohistochemical analysis of paraffin-embedded human colon cancer tissue slide using 60268-1-Ig (PKM2-specific antibody) at dilution of 1:500 (under 40x lens). Heat mediated antigen retrieval with Tris-EDTA buffer (pH 9.0). This data was developed using the same antibody clone with 60268-1-PBS in a different storage buffer formulation.