

For Research Use Only

IL-28A Monoclonal antibody, PBS Only (Capture)



Catalog Number: 60270-1-PBS

Basic Information

Catalog Number: 60270-1-PBS	GenBank Accession Number: BC113583	Purification Method: Protein G purification
Size: 1mg/ml	GeneID (NCBI): 282616	CloneNo.: 3B4A1
Source: Mouse	UNIPROT ID: Q8IZJ0	Affinity: $K_D = 1.77 \times 10^9$
Isotype: IgG1	Full Name: interleukin 28A (interferon, lambda 2)	$K_{Off} = 4.10 \times 10^{-5}$ $K_{On} = 2.31 \times 10^4$
Immunogen Catalog Number: AG18525	Calculated MW: 200 aa, 22 kDa	

Applications

Tested Applications:
IF, IHC, Sandwich ELISA, Indirect ELISA

Species Specificity:
human

Background Information

IL28A, also named as IFNL2 and ZCYT020, is a cytokine with immunomodulatory activity. It up-regulates MHC class I antigen expression. IL28A is a ligand for the heterodimeric class II cytokine receptor composed of IL10RB and IFNLR1. The ligand/receptor complex seems to signal through the Jak-STAT pathway. It plays a significant role in the antiviral immune defense in the intestinal epithelium.

Storage

Storage:
Store at -80°C.
The product is shipped with ice packs. Upon receipt, store it immediately at -80°C

Storage Buffer:
100% PBS pH 7.3

For technical support and original validation data for this product please contact:

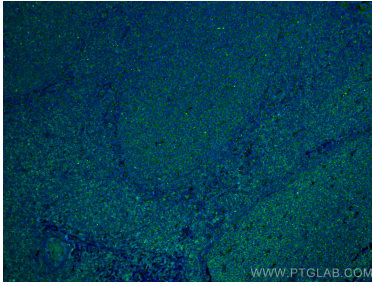
T: 4006900926

E: Proteintech-CN@ptglab.com

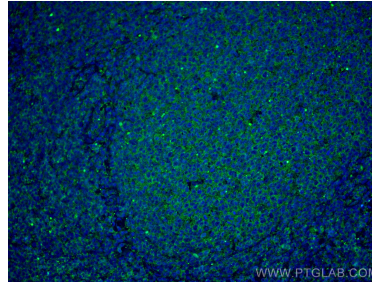
W: ptgcn.com

This product is exclusively available under Proteintech Group brand and is not available to purchase from any other manufacturer.

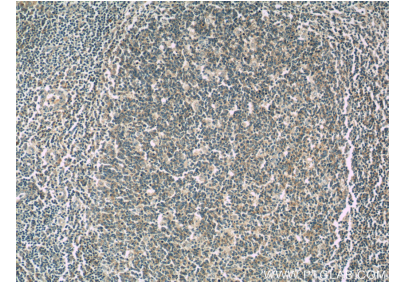
Selected Validation Data



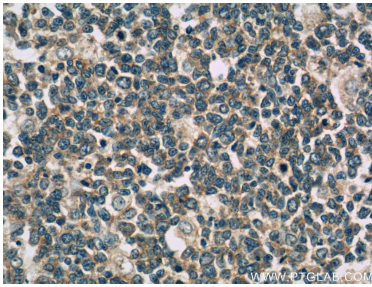
Immunofluorescent analysis of (4% PFA) fixed human tonsillitis tissue using IL-28A antibody (60270-1-Ig, Clone: 3B4A1) at dilution of 1:400 and CoraLite®488-Conjugated AffiniPure Goat Anti-Mouse IgG(H+L). This data was developed using the same antibody clone with 60270-1-PBS in a different storage buffer formulation.



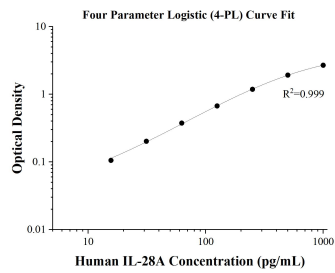
Immunofluorescent analysis of (4% PFA) fixed human tonsillitis tissue using IL-28A antibody (60270-1-Ig, Clone: 3B4A1) at dilution of 1:400 and CoraLite®488-Conjugated AffiniPure Goat Anti-Mouse IgG(H+L). This data was developed using the same antibody clone with 60270-1-PBS in a different storage buffer formulation.



Immunohistochemical analysis of paraffin-embedded human tonsillitis tissue slide using 60270-1-Ig (IL-28A antibody at dilution of 1:50 (under 10x lens). This data was developed using the same antibody clone with 60270-1-PBS in a different storage buffer formulation.



Immunohistochemical analysis of paraffin-embedded human tonsillitis tissue slide using 60270-1-Ig (IL-28A antibody at dilution of 1:50 (under 40x lens). This data was developed using the same antibody clone with 60270-1-PBS in a different storage buffer formulation.



Sandwich ELISA standard curve of MP50008-1, IL-28A Monoclonal Matched Antibody Pair - PBS only. 60270-1-PBS was coated to a plate as the capture antibody and incubated with serial dilutions of standard HZ-1235. 68669-1-PBS was HRP conjugated as the detection antibody. Range: 15.6-1000 pg/mL.