

For Research Use Only

# FAM3C Monoclonal antibody, PBS Only



Catalog Number: 60282-1-PBS

## Basic Information

<b>Catalog Number:</b> 60282-1-PBS	<b>GenBank Accession Number:</b> BC046932	<b>Purification Method:</b> Protein A purification
<b>Size:</b> 1 mg/ml	<b>GeneID (NCBI):</b> 10447	<b>CloneNo.:</b> 2E10D5
<b>Source:</b> Mouse	<b>UNIPROT ID:</b> Q92520	
<b>Isotype:</b> IgG1	<b>Full Name:</b> family with sequence similarity 3, member C	
<b>Immunogen Catalog Number:</b> AG5516	<b>Calculated MW:</b> 25 kDa	
	<b>Observed MW:</b> 25 kDa	

## Applications

**Tested Applications:**  
WB, Indirect ELISA, IHC, IF

**Species Specificity:**  
human

## Background Information

FAM3C, also known as ILEI, is a secreted protein belonging to the cytokine-like protein family. FAM3C is a signaling cytokine with a GG domain, hydrophobic leader sequence and an N-terminal signal peptide. A change in expression of this protein has been noted in pancreatic cancer-derived cells. FAM3C has been involved in the epithelial to mesenchymal transition, and retinal laminar formation processes in vertebrates. Also, FAM3C may play an important role in inner ear development and thus be involved in cell differentiation and proliferation during inner ear embryogenesis.

## Storage

**Storage:**  
Store at -80°C.  
**The product is shipped with ice packs. Upon receipt, store it immediately at -80°C**

**Storage Buffer:**  
PBS Only

For technical support and original validation data for this product please contact:

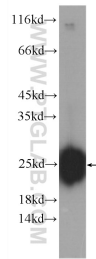
T: 4006900926

E: [Proteintech-CN@ptglab.com](mailto:Proteintech-CN@ptglab.com)

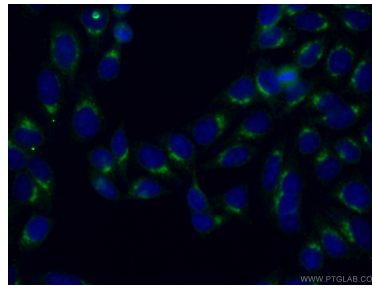
W: [ptgcn.com](http://ptgcn.com)

**This product is exclusively available under Proteintech Group brand and is not available to purchase from any other manufacturer.**

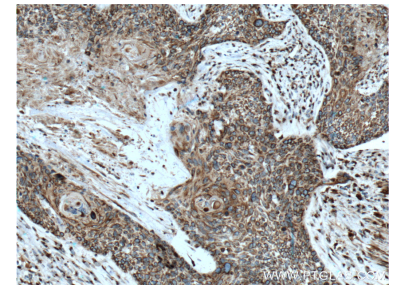
## Selected Validation Data



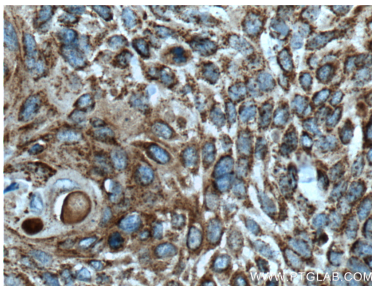
fetal human brain tissue were subjected to SDS PAGE followed by western blot with 60282-1-Ig (FAM3C Antibody) at dilution of 1:1000 incubated at room temperature for 1.5 hours. This data was developed using the same antibody clone with 60282-1-PBS in a different storage buffer formulation.



Immunofluorescent analysis of (-20°C Ethanol) fixed HepG2 cells using 60282-1-Ig(FAM3C antibody) at dilution of 1:100 and Alexa Fluor 488-conjugated AffiniPure Goat Anti-Mouse IgG(H+L). This data was developed using the same antibody clone with 60282-1-PBS in a different storage buffer formulation.



Immunohistochemical analysis of paraffin-embedded human oesophagus cancer tissue slide using 60282-1-Ig (FAM3C Antibody) at dilution of 1:200 (under 10x lens). Heat mediated antigen retrieval with Tris-EDTA buffer (pH 9.0). This data was developed using the same antibody clone with 60282-1-PBS in a different storage buffer formulation.



Immunohistochemical analysis of paraffin-embedded human oesophagus cancer tissue slide using 60282-1-Ig (FAM3C Antibody) at dilution of 1:200 (under 40x lens). Heat mediated antigen retrieval with Tris-EDTA buffer (pH 9.0). This data was developed using the same antibody clone with 60282-1-PBS in a different storage buffer formulation.