

For Research Use Only

# RBM4 Monoclonal antibody, PBS Only



Catalog Number: 60292-1-PBS

Featured Product

## Basic Information

<b>Catalog Number:</b> 60292-1-PBS	<b>GenBank Accession Number:</b> BC021120	<b>Purification Method:</b> Protein A purification
<b>Size:</b> 1 mg/ml	<b>GeneID (NCBI):</b> 5936	<b>CloneNo.:</b> 3H3F12
<b>Source:</b> Mouse	<b>UNIPROT ID:</b> Q9BWF3	
<b>Isotype:</b> IgG2a	<b>Full Name:</b> RNA binding motif protein 4	
<b>Immunogen Catalog Number:</b> AG2190	<b>Calculated MW:</b> 40 kDa	
	<b>Observed MW:</b> 40 kDa	

## Applications

**Tested Applications:**  
WB, Indirect ELISA, IHC, IF

**Species Specificity:**  
human

## Background Information

RBM4, RNA-binding motif protein4, contains 2 RRM-type RNA-binding motif and a retroviral-type(RT) zinc finger. RNA-binding factor participates in number of aspects of cellular processes such as alternative splicing of pre-mRNA and translation regulation. RBM4 recruits eIF4A1 to stimulate IRES-dependent translation in responds to cellular stress. Once assembled at the rHRE, the HIF2A-RBM4-eIF4E2 complex captures the 5-prime cap and targets mRNAs to polysomes for active translation, thereby evading hypoxia-induced repression of protein synthesis.

## Storage

**Storage:**  
Store at -80°C.  
**The product is shipped with ice packs. Upon receipt, store it immediately at -80°C**

**Storage Buffer:**  
PBS Only

For technical support and original validation data for this product please contact:

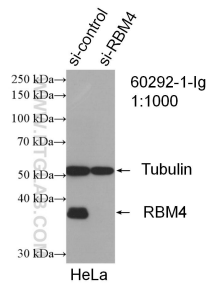
T: 4006900926

E: [Proteintech-CN@ptglab.com](mailto:Proteintech-CN@ptglab.com)

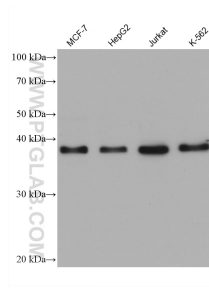
W: [ptgcn.com](http://ptgcn.com)

**This product is exclusively available under Proteintech Group brand and is not available to purchase from any other manufacturer.**

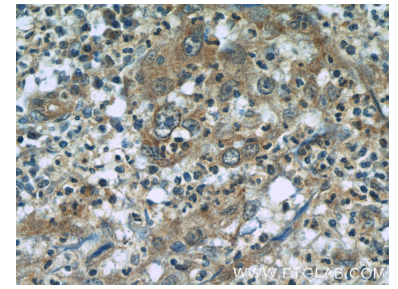
## Selected Validation Data



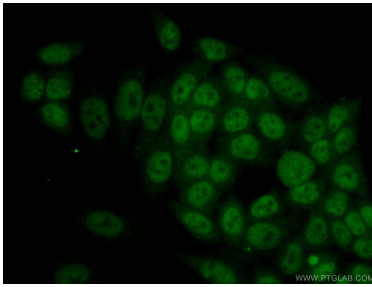
WB result of RBM4 antibody (60292-1-Ig; 1:1000; incubated at room temperature for 1.5 hours) with sh-Control and sh-RBM4 transfected HeLa cells. This data was developed using the same antibody clone with 60292-1-PBS in a different storage buffer formulation.



Various lysates were subjected to SDS PAGE followed by western blot with 60292-1-Ig (RBM4 antibody) at dilution of 1:20000 incubated at room temperature for 1.5 hours. This data was developed using the same antibody clone with 60292-1-PBS in a different storage buffer formulation.



Immunohistochemical analysis of paraffin-embedded human cervical cancer tissue slide using 60292-1-Ig (RBM4 Antibody) at dilution of 1:50 (under 40x lens). This data was developed using the same antibody clone with 60292-1-PBS in a different storage buffer formulation.



Immunofluorescent analysis of (10% Formaldehyde ) fixed HeLa cells using 60292-1-Ig(RBM4 antibody) at dilution of 1:100 and Alexa Fluor 488-conjugated AffiniPure Goat Anti-Mouse IgG(H+L). This data was developed using the same antibody clone with 60292-1-PBS in a different storage buffer formulation.