

For Research Use Only

OPTN Monoclonal antibody, PBS Only



Catalog Number: 60293-1-PBS

Featured Product

Basic Information

Catalog Number:

60293-1-PBS

Size:

1 mg/ml

Source:

Mouse

Isotype:

IgG1

Immunogen Catalog Number:

AG1272

GenBank Accession Number:

BC013876

GeneID (NCBI):

10133

UNIPROT ID:

Q96CV9

Full Name:

optineurin

Calculated MW:

66 kDa

Observed MW:

70-74 kDa

Purification Method:

Protein A purification

CloneNo.:

6C1H4

Applications

Tested Applications:

WB, Indirect ELISA, IHC, IF

Species Specificity:

human

Background Information

OPTN, also named as FIP2, GLC1E, HIP7, HYPL and NRP, plays a neuroprotective role in the eye and optic nerve. It is probably part of the TNF- α signaling pathway that can shift the equilibrium toward induction of cell death. OPTN may act by regulating membrane trafficking and cellular morphogenesis via a complex that contains Rab8 and huntingtin (HD). OPTN may constitute a cellular target for adenovirus E3 14.7, an inhibitor of TNF- α functions, thereby affecting cell death. Defects in OPTN are the cause of primary open angle glaucoma type 1E (GLC1E). Defects in OPTN are a cause of susceptibility to normal pressure glaucoma (NPG). OPTN mutated in adult-onset primary open angle glaucoma. It supports the protective role of OPTN in the trabecular meshwork.

Storage

Storage:

Store at -80°C .

Storage Buffer:

PBS Only

For technical support and original validation data for this product please contact:

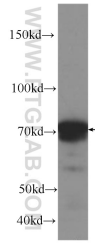
T: 4006900926

E: Proteintech-CN@ptglab.com

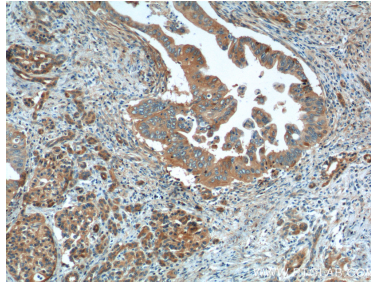
W: ptgcn.com

This product is exclusively available under Proteintech Group brand and is not available to purchase from any other manufacturer.

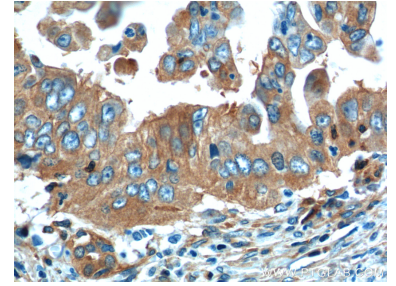
Selected Validation Data



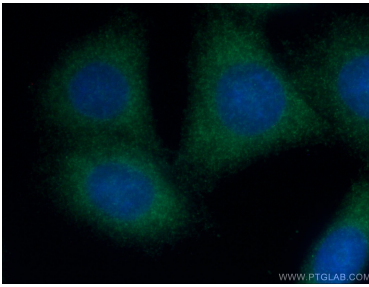
human heart tissue were subjected to SDS PAGE followed by western blot with 60293-1-Ig (OPTN Antibody) at dilution of 1:1000 incubated at room temperature for 1.5 hours. This data was developed using the same antibody clone with 60293-1-PBS in a different storage buffer formulation.



Immunohistochemical analysis of paraffin-embedded human pancreas cancer tissue slide using 60293-1-Ig (OPTN Antibody) at dilution of 1:200 (under 10x lens). This data was developed using the same antibody clone with 60293-1-PBS in a different storage buffer formulation.



Immunohistochemical analysis of paraffin-embedded human pancreas cancer tissue slide using 60293-1-Ig (OPTN Antibody) at dilution of 1:200 (under 40x lens). This data was developed using the same antibody clone with 60293-1-PBS in a different storage buffer formulation.



Immunofluorescent analysis of (-20°C Ethanol) fixed HepG2 cells using 60293-1-Ig (OPTN antibody) at dilution of 1:100 and Alexa Fluor 488-conjugated AffiniPure Goat Anti-Mouse IgG(H+L). This data was developed using the same antibody clone with 60293-1-PBS in a different storage buffer formulation.