

For Research Use Only

# PTEN Monoclonal antibody, PBS Only



Catalog Number: 60300-1-PBS

Featured Product

## Basic Information

<b>Catalog Number:</b> 60300-1-PBS	<b>GenBank Accession Number:</b> BC005821	<b>Purification Method:</b> Protein A purification
<b>Size:</b> 1mg/ml	<b>GeneID (NCBI):</b> 5728	<b>CloneNo.:</b> 5C10B6
<b>Source:</b> Mouse	<b>UNIPROT ID:</b> P60484	
<b>Isotype:</b> IgG2a	<b>Full Name:</b> phosphatase and tensin homolog	
<b>Immunogen Catalog Number:</b> AG17274	<b>Calculated MW:</b> 47 kDa	
	<b>Observed MW:</b> 55 kDa	

## Applications

**Tested Applications:**  
WB, IF, IHC, Indirect ELISA

**Species Specificity:**  
human, mouse

## Background Information

PTEN (also designated MMAC1), products of tumor suppressor genes, are found deleted in most human gliomas. The PTEN genes are also mutated in many other tumors, such as brain, breast, kidney and prostate cancers. PTEN is a protein tyrosine phosphatase that may terminate the signaling transduction pathways mediated by PI 3-kinase/Akt. PTEN has an apparent molecular weight of 55 kDa and it is located in the cytosol.

## Storage

**Storage:**  
Store at -80°C.

**Storage Buffer:**  
PBS Only

For technical support and original validation data for this product please contact:

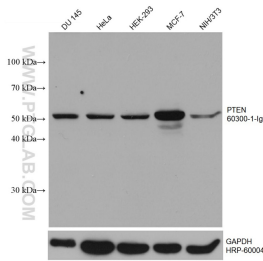
T: 4006900926

E: [Proteintech-CN@ptglab.com](mailto:Proteintech-CN@ptglab.com)

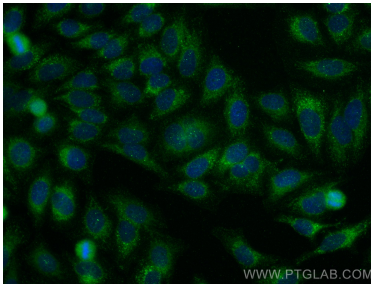
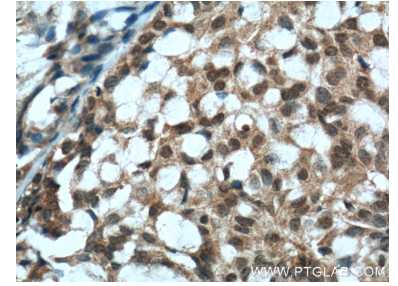
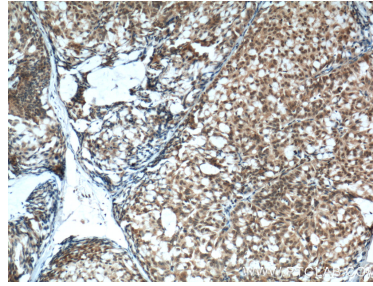
W: [ptgcn.com](http://ptgcn.com)

This product is exclusively available under Proteintech Group brand and is not available to purchase from any other manufacturer.

## Selected Validation Data



Various lysates were subjected to SDS PAGE followed by western blot with 60300-1-Ig (PTEN antibody) at dilution of 1:5000 incubated at room temperature for 1.5 hours. The membrane was stripped and reblotted with HRP-conjugated GAPDH Monoclonal antibody (HRP-60004) as loading control. This data was developed using the same antibody clone with 60300-1-PBS in a different storage buffer formulation.



Immunofluorescent analysis of (-20°C Methanol) fixed HepG2 cells using PTEN antibody (60300-1-Ig, Clone: 5C10B6) at dilution of 1:400 and CoraLite@488-Conjugated AffiniPure Goat Anti-Mouse IgG(H+L). This data was developed using the same antibody clone with 60300-1-PBS in a different storage buffer formulation.