

For Research Use Only

Vimentin Monoclonal antibody, PBS Only (Detector)



Catalog Number: 60330-1-PBS

Featured Product

Basic Information

Catalog Number: 60330-1-PBS	GenBank Accession Number: BC000163	Purification Method: Protein A purification
Size: 1mg/ml	GeneID (NCBI): 7431	CloneNo.: 3H9D1
Source: Mouse	ENSEMBL Gene ID: ENSG00000026025	
Isotype: IgG1	UNIPROT ID: P08670	
Immunogen Catalog Number: AG0489	Full Name: vimentin	
	Calculated MW: 466 aa, 54 kDa	
	Observed MW: 55-60 kDa	

Applications

Tested Applications:
WB, IF, FC, IHC, Indirect ELISA, Cytometric bead array

Species Specificity:
human, mouse, rat

Background Information

Vimentin, also named as VIM, belongs to the intermediate filament family. Vimentin is class-III intermediate filaments found in various non-epithelial cells, especially mesenchymal cells. Vimentin is important for stabilizing the architecture of the cytoplasm. Monocyte-derived macrophages secrete vimentin into the extracellular space in vitro. Secretion of vimentin was enhanced by the proinflammatory cytokine tumor necrosis factor- α (TNF α ; 191160) and inhibited by the antiinflammatory cytokine IL10 (124092), suggesting that vimentin is involved in the immune response. Vimentin has specialized functions that contribute to specific dynamic cellular processes. As a phosphoprotein, 55-60 kDa of vimentin proteins can be observed due to the different phosphorylation level.

Storage

Storage:
Store at -20°C. Stable for one year after shipment.

Storage Buffer:
PBS only

Aliquoting is unnecessary for -20°C storage

For technical support and original validation data for this product please contact:

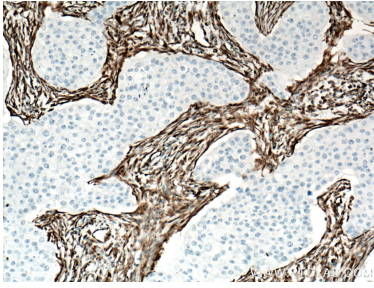
T: 4006900926

E: Proteintech-CN@ptglab.com

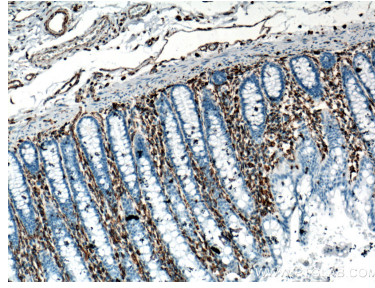
W: ptgcn.com

This product is exclusively available under Proteintech Group brand and is not available to purchase from any other manufacturer.

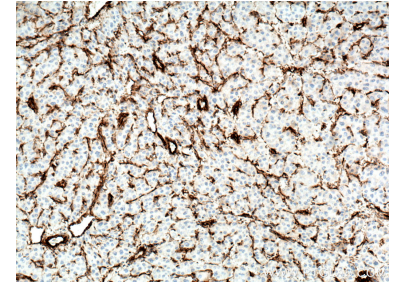
Selected Validation Data



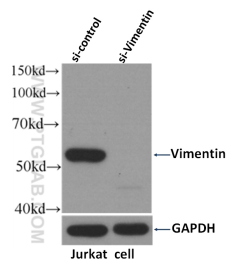
Immunohistochemical analysis of paraffin-embedded human breast cancer tissue slide using 60330-1-Ig (Vimentin antibody) at dilution of 1:8000 (under 10x lens. Heat mediated antigen retrieval with Tris-EDTA buffer (pH 9.0). This data was developed using the same antibody clone with 60330-1-PBS in a different storage buffer formulation.



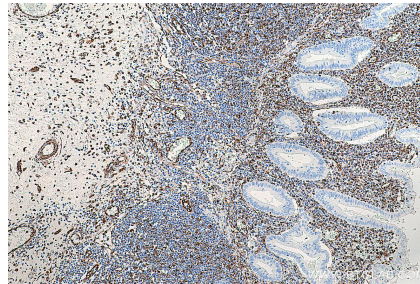
Immunohistochemical analysis of paraffin-embedded human colon tissue slide using 60330-1-Ig (Vimentin antibody) at dilution of 1:102400 (under 10x lens. Heat mediated antigen retrieval with Tris-EDTA buffer (pH 9.0). This data was developed using the same antibody clone with 60330-1-PBS in a different storage buffer formulation.



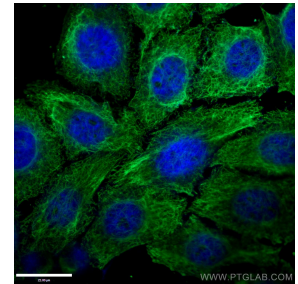
Immunohistochemical analysis of paraffin-embedded human liver cancer tissue slide using 60330-1-Ig (Vimentin antibody) at dilution of 1:6400 (under 10x lens. Heat mediated antigen retrieval with Tris-EDTA buffer (pH 9.0). This data was developed using the same antibody clone with 60330-1-PBS in a different storage buffer formulation.



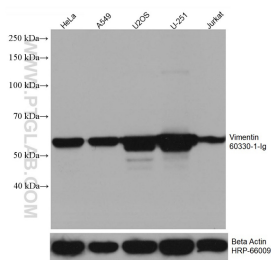
WB result of Vimentin antibody (60330-1-Ig, 1:4000) with si-Control and si-Vimentin transfected Jurkat cells. This data was developed using the same antibody clone with 60330-1-PBS in a different storage buffer formulation.



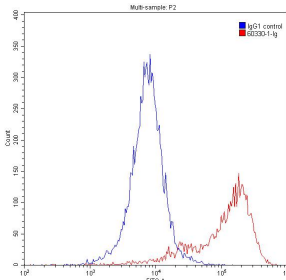
Immunohistochemical analysis of paraffin-embedded human appendicitis tissue slide using 60330-1-Ig (Vimentin antibody) at dilution of 1:8000 (under 10x lens). Heat mediated antigen retrieval with Tris-EDTA buffer (pH 9.0). This data was developed using the same antibody clone with 60330-1-PBS in a different storage buffer formulation.



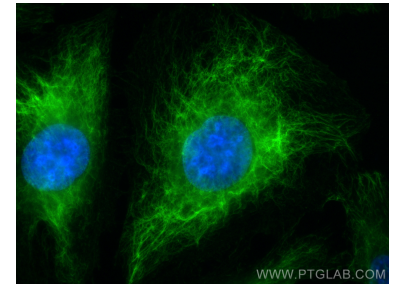
Immunofluorescent analysis of (-20°C Ethanol) fixed HepG2 cells using 60330-1-Ig (Vimentin antibody) at dilution of 1:100 and Alexa Fluor 488-Conjugated AffiniPure Goat Anti-Mouse IgG(H+L). This data was developed using the same antibody clone with 60330-1-PBS in a different storage buffer formulation.



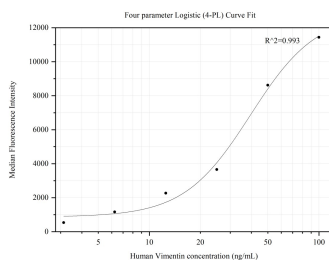
Various lysates were subjected to SDS PAGE followed by western blot with 60330-1-Ig (Vimentin antibody) at dilution of 1:50000 incubated at room temperature for 1.5 hours. The membrane was stripped and reblotted with HRP-conjugated Beta Actin Monoclonal antibody (HRP-66009) as loading control. This data was developed using the same antibody clone with 60330-1-PBS in a different storage buffer formulation.



1X10⁶ Jurkat cells were stained with 0.2 ug Anti-Human Vimentin (60330-1-Ig, Clone:3H9D1) and CoraLite488-Conjugated AffiniPure Goat Anti-Mouse IgG(H+L) at dilution 1:1500 (red), or stained with 0.2 ug isotype control and CoraLite488-Conjugated AffiniPure Goat Anti-Mouse IgG(H+L) at dilution 1:1500 (blue). Cells were fixed with 90% MeOH. This data was developed using the same antibody clone with 60330-1-PBS in a different storage buffer formulation.



Immunofluorescent analysis of (-20°C Methanol) fixed HUVEC cells using Vimentin antibody (60330-1-Ig, Clone: 3H9D1) at dilution of 1:1000 and CoraLite@488-Conjugated AffiniPure Goat Anti-Mouse IgG(H+L). This data was developed using the same antibody clone with 60330-1-PBS in a different storage buffer formulation.



Cytometric bead array standard curve of MP50158-1, Vimentin Monoclonal Matched Antibody Pair, PBS Only. Capture antibody: 60330-2-PBS. Detection antibody: 60330-1-PBS. Standard: ag0489. Range: 3.125-100 ng/mL