

For Research Use Only

Prostein Monoclonal antibody, PBS Only



Catalog Number: 60343-1-PBS

Basic Information

Catalog Number: 60343-1-PBS	GenBank Accession Number: BC050416	Purification Method: Protein A purification
Size: 1 mg/ml	GeneID (NCBI): 85414	CloneNo.: 5E12E2
Source: Mouse	UNIPROT ID: Q96JT2	
Isotype: IgG2b	Full Name: solute carrier family 45, member 3	
Immunogen Catalog Number: AG5463	Calculated MW: 59 kDa	
	Observed MW: 55-59 kDa	

Applications

Tested Applications:
WB, Indirect ELISA, IHC, IF

Species Specificity:
human, mouse, rat

Background Information

Prostein is a prostate tissue-specific protein whose expression is highly restricted to normal and cancerous prostate tissues. Anti-prostein is useful for the identification of prostate adenocarcinomas and is a good marker to identify prostatic origin in metastatic cancer.

Storage

Storage:
Store at -80°C.

Storage Buffer:
PBS Only

For technical support and original validation data for this product please contact:

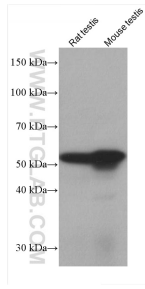
T: 4006900926

E: Proteintech-CN@ptglab.com

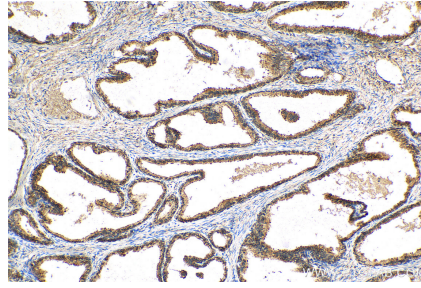
W: ptgcn.com

This product is exclusively available under Proteintech Group brand and is not available to purchase from any other manufacturer.

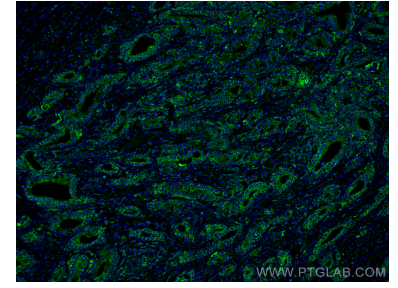
Selected Validation Data



Various lysates were subjected to SDS PAGE followed by western blot with 60343-1-Ig (Prostein antibody) at dilution of 1:10000 incubated at room temperature for 1.5 hours. This data was developed using the same antibody clone with 60343-1-PBS in a different storage buffer formulation.



Immunohistochemical analysis of paraffin-embedded human prostate cancer tissue slide using 60343-1-Ig (Prostein antibody) at dilution of 1:1000 (under 10x lens). Heat mediated antigen retrieval with Tris-EDTA buffer (pH 9.0). This data was developed using the same antibody clone with 60343-1-PBS in a different storage buffer formulation.



Immunofluorescent analysis of (4% PFA) fixed human prostate cancer tissue using Prostein antibody (60343-1-Ig, Clone: 5E12E2) at dilution of 1:400 and Coralite® 488-Conjugated AffiniPure Goat Anti-Mouse IgG(H+L). This data was developed using the same antibody clone with 60343-1-PBS in a different storage buffer formulation.