

For Research Use Only

# NR1H2 Monoclonal antibody

Catalog Number: 60345-1-Ig

Featured Product

11 Publications



## Basic Information

Catalog Number:

60345-1-Ig

Size:

1500 µg/ml

Source:

Mouse

Isotype:

IgG1

Immunogen Catalog Number:

AG5635

GenBank Accession Number:

BC047750

GeneID (NCBI):

7376

UNIPROT ID:

P55055

Full Name:

nuclear receptor subfamily 1, group H, member 2

Calculated MW:

51 kDa

Observed MW:

51 kDa

Purification Method:

Protein A purification

CloneNo.:

1E12B10

Recommended Dilutions:

WB 1:500-1:2000

## Applications

Tested Applications:

FC, WB, ELISA

Cited Applications:

WB, IHC, ChIP

Species Specificity:

human, pig

Cited Species:

human, mouse

Positive Controls:

WB : human liver tissue, pig liver tissue

## Background Information

NR1H2, also known as LXRB, is a liver X receptors, which form a subfamily of the nuclear receptor superfamily and are key regulators of macrophage function, controlling transcriptional programs involved in lipid homeostasis and inflammation. It preferentially bind to double-stranded oligonucleotide direct repeats, which have the consensus half-site sequence 5'-AGGTC A-3' and 4-nt spacing (DR-4). It involves in the regulation of cholesterol uptake through MYLIP-dependent ubiquitination of LDLR, VLDLR and LRP8.

## Notable Publications

Author	Pubmed ID	Journal	Application
Dan Zhao	32963108	J Biol Chem	WB
Fenghua Guo	30224060	Biochem Biophys Res Commun	WB
Ying Liu	30309895	J Lipid Res	WB

## Storage

Storage:

Store at -20°C. Stable for one year after shipment.

Storage Buffer:

PBS with 0.02% sodium azide and 50% glycerol pH 7.3.

Aliquoting is unnecessary for -20°C storage

For technical support and original validation data for this product please contact:

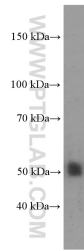
T: 4006900926

E: Proteintech-CN@ptglab.com

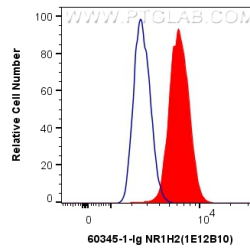
W: ptgcn.com

This product is exclusively available under Proteintech Group brand and is not available to purchase from any other manufacturer.

## Selected Validation Data



human liver tissue were subjected to SDS PAGE followed by western blot with 60345-1-Ig (NR1H2 Antibody) at dilution of 1:1000 incubated at room temperature for 1.5 hours.



$1 \times 10^6$  HepG2 cells were intracellularly stained with 0.4  $\mu$ g Anti-Human NR1H2 (60345-1-Ig, Clone:1E12B10) and CoraLite<sup>®</sup>488-Conjugated AffiniPure Goat Anti-Mouse IgG(H+L) at dilution 1:1000 (red), or 0.4  $\mu$ g Mouse IgG1 Isotype Control (MOPC-21) (65124-1-Ig, Clone: MOPC-21) (blue). Cells were fixed and permeabilized with Transcription Factor Staining Buffer Kit (PF00011).