

For Research Use Only

Gastrin Monoclonal antibody, PBS Only



Catalog Number: 60346-1-PBS

Basic Information

Catalog Number: 60346-1-PBS	GenBank Accession Number: BC069724	Purification Method: Protein A purification
Size: 1 mg/ml	GeneID (NCBI): 2520	CloneNo.: 7G9C3
Source: Mouse	UNIPROT ID: P01350	
Isotype: IgG2a	Full Name: gastrin	
Immunogen Catalog Number: AG12795	Calculated MW: 101 aa, 11 kDa	

Applications

Tested Applications:
Indirect ELISA, IHC, IF

Species Specificity:
human

Background Information

Gastrin is a hormone produced primarily by G-cells in the stomach, where it functions to stimulate acid secretion by gastric parietal cells. Gastrin is a promiscuous hormone. Thus, the gastrin gene is expressed in common cancers such as bronchogenic, colorectal, ovarian and pancreatic carcinomas.

Storage

Storage:
Store at -80°C.

Storage Buffer:
PBS Only

For technical support and original validation data for this product please contact:

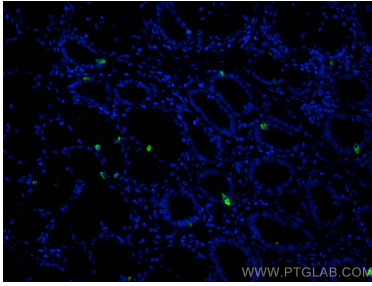
T: 4006900926

E: Proteintech-CN@ptglab.com

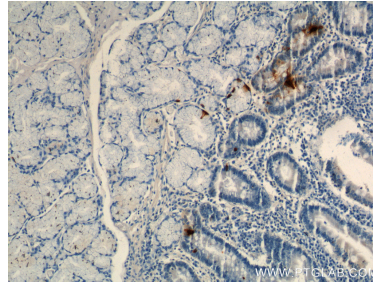
W: ptgcn.com

This product is exclusively available under Proteintech Group brand and is not available to purchase from any other manufacturer.

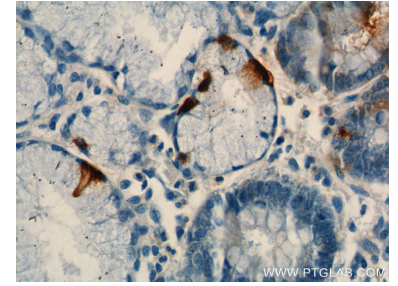
Selected Validation Data



Immunofluorescent analysis of (4% PFA) fixed paraffin-embedded human stomach cancer tissue using Gastrin antibody (60346-1-Ig, Clone: 7G9C3) at dilution of 1:400 and CoraLite®488-Conjugated AffiniPure Goat Anti-Mouse IgG(H+L) (SA00013-1). Heat mediated antigen retrieval with Tris-EDTA buffer (pH 9.0). This data was developed using the same antibody clone with 60346-1-PBS in a different storage buffer formulation.



Immunohistochemical analysis of paraffin-embedded human stomach tissue slide using 60346-1-Ig (Gastrin antibody) at dilution of 1:350 (under 10x lens). This data was developed using the same antibody clone with 60346-1-PBS in a different storage buffer formulation.



Immunohistochemical analysis of paraffin-embedded human stomach tissue slide using 60346-1-Ig (Gastrin antibody) at dilution of 1:350 (under 40x lens). This data was developed using the same antibody clone with 60346-1-PBS in a different storage buffer formulation.