

For Research Use Only

# Inhibin beta A-Specific Monoclonal antibody, PBS Only



Catalog Number: 60352-1-PBS

## Basic Information

Catalog Number:

60352-1-PBS

Size:

1 mg/ml

Source:

Mouse

Isotype:

IgG1

GenBank Accession Number:

NM\_002192

GeneID (NCBI):

3624

UNIPROT ID:

P08476

Full Name:

inhibin, beta A

Calculated MW:

47 kDa

Observed MW:

47 kDa

Purification Method:

Protein A purification

CloneNo.:

1F8D8

## Applications

Tested Applications:

WB, Indirect ELISA, IHC

Species Specificity:

human, pig

## Background Information

Inhibin  $\beta$  A (INHBA) is a ligand in the transforming growth factor  $\beta$  (TGF- $\beta$ ) superfamily. Inhibin  $\beta$  A forms a disulfide-linked homo-dimer known as activin A, which has been implicated in multiple biologic processes, including neoplastic progression. The inhibin  $\beta$  A can also bind the  $\beta$  B and  $\alpha$  isoforms to form activin AB and inhibin, respectively.

## Storage

Storage:

Store at  $-80^{\circ}\text{C}$ .

Storage Buffer:

PBS Only

For technical support and original validation data for this product please contact:

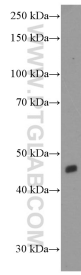
T: 4006900926

E: [Proteintech-CN@ptglab.com](mailto:Proteintech-CN@ptglab.com)

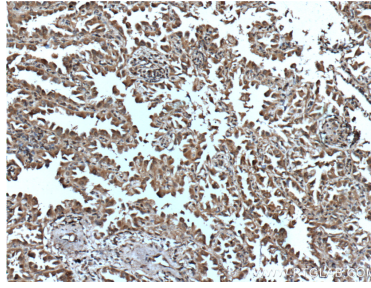
W: [ptgcn.com](http://ptgcn.com)

This product is exclusively available under Proteintech Group brand and is not available to purchase from any other manufacturer.

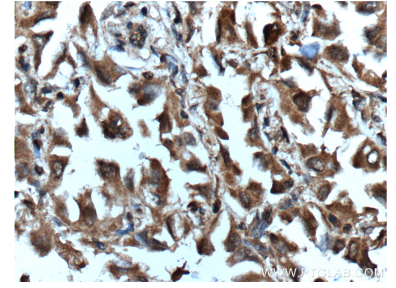
## Selected Validation Data



HepG2 cells were subjected to SDS PAGE followed by western blot with 60352-1-Ig (INHBA-Specific Antibody) at dilution of 1:1000 incubated at room temperature for 1.5 hours. This data was developed using the same antibody clone with 60352-1-PBS in a different storage buffer formulation.



Immunohistochemical analysis of paraffin-embedded human lung cancer tissue slide using 60352-1-Ig (INHBA-Specific Antibody) at dilution of 1:200 (under 10x lens). Heat mediated antigen retrieval with Tris-EDTA buffer (pH 9.0). This data was developed using the same antibody clone with 60352-1-PBS in a different storage buffer formulation.



Immunohistochemical analysis of paraffin-embedded human lung cancer tissue slide using 60352-1-Ig (INHBA-Specific Antibody) at dilution of 1:150 (under 40x lens). Heat mediated antigen retrieval with Tris-EDTA buffer (pH 9.0). This data was developed using the same antibody clone with 60352-1-PBS in a different storage buffer formulation.