

For Research Use Only

ALDH1L2 Monoclonal antibody, PBS Only (Capture)

Catalog Number: 60405-1-PBS



Basic Information

Catalog Number: 60405-1-PBS	GenBank Accession Number: BC103935	Purification Method: Protein G Magarose purification
Size: 1 mg/ml	GeneID (NCBI): 160428	CloneNo.: 1F11C3
Source: Mouse	UNIPROT ID: Q3SY69	
Isotype: IgG1	Full Name: aldehyde dehydrogenase 1 family, member L2	
Immunogen Catalog Number: AG17340	Calculated MW: 923 aa, 102 kDa	

Applications

Tested Applications:
Cytometric bead array, Indirect ELISA

Species Specificity:
human

Background Information

Storage

Storage:
Store at -80°C.
The product is shipped with ice packs. Upon receipt, store it immediately at -80°C

Storage Buffer:
PBS Only

For technical support and original validation data for this product please contact:

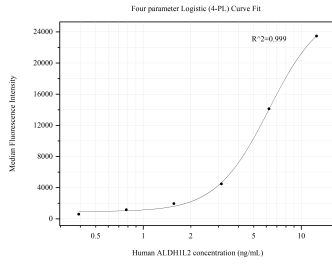
T: 4006900926

E: Proteintech-CN@ptglab.com

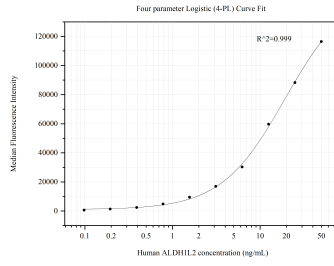
W: ptgcn.com

This product is exclusively available under Proteintech Group brand and is not available to purchase from any other manufacturer.

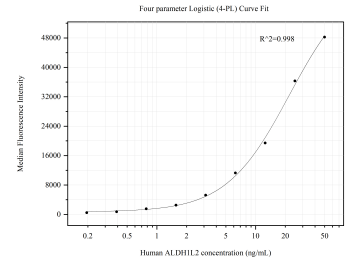
Selected Validation Data



Cytometric bead array standard curve of MP50511-1, ALDH1L2 Monoclonal Matched Antibody Pair, PBS Only. Capture antibody: 60405-1-PBS. Detection antibody: 60405-2-PBS. Standard:Ag17340. Range: 0.391-12.5 ng/mL



Cytometric bead array standard curve of MP50511-3, ALDH1L2 Monoclonal Matched Antibody Pair, PBS Only. Capture antibody: 60405-1-PBS. Detection antibody: 60405-4-PBS. Standard:Ag17340. Range: 0.098-50 ng/mL



Cytometric bead array standard curve of MP50511-4, ALDH1L2 Monoclonal Matched Antibody Pair, PBS Only. Capture antibody: 60405-1-PBS. Detection antibody: 60405-5-PBS. Standard:Ag17340. Range: 0.195-50 ng/mL