

For Research Use Only

Prokineticin 1 Monoclonal antibody, PBS Only (Capture)

Catalog Number: 60417-1-PBS



Basic Information

Catalog Number:

60417-1-PBS

Concentration:

1 mg/ml

Source:

Mouse

Isotype:

IgG1

Immunogen Catalog Number:

AG8079

GenBank Accession Number:

BC025399

GeneID (NCBI):

84432

UNIPROT ID:

P58294

Full Name:

prokineticin 1

Calculated MW:

12 kDa

Purification Method:

Protein G Magarose purification

CloneNo.:

1E12G3

Applications

Tested Applications:

Cytometric bead array, Sandwich ELISA, Indirect ELISA,
Sample test

Species Specificity:

human

Background Information

Storage

Storage:

Store at -80°C.

The product is shipped with ice packs. Upon receipt, store it immediately at -80°C

Storage Buffer:

PBS Only

For technical support and original validation data for this product please contact:

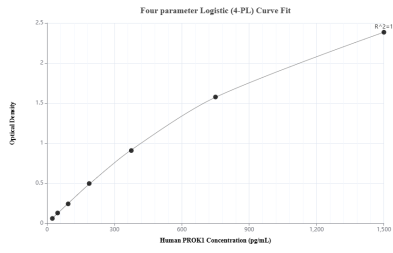
T: 4006900926

E: Proteintech-CN@ptglab.com

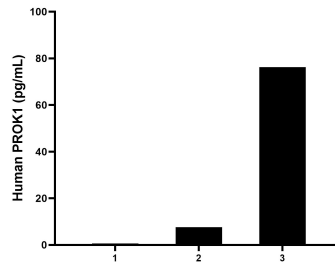
W: ptgcn.com

This product is exclusively available under Proteintech Group brand and is not available to purchase from any other manufacturer.

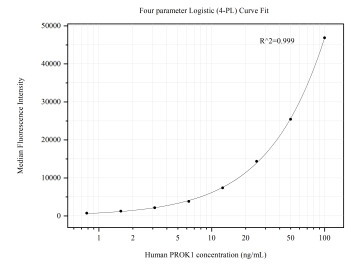
Selected Validation Data



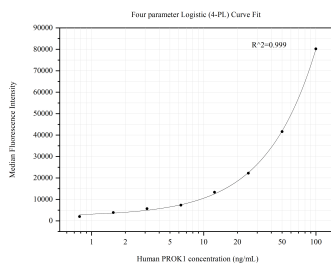
Sandwich ELISA standard curve of MP50534-2, Human PROK1 Monoclonal Matched Antibody Pair - PBS only. 60417-1-PBS was coated to a plate as the capture antibody and incubated with serial dilutions of standard Ag8079. 60417-3-PBS was HRP conjugated as the detection antibody. Range: 23.4-1500 pg/mL



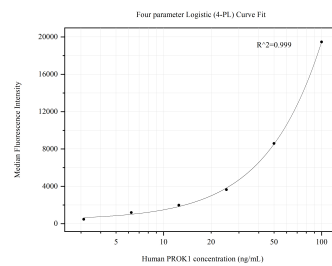
Serum of three individual healthy human donors was measured. The human PROK1 concentration of detected samples was determined to be 28.1 pg/mL with a range of 0.6-76.2 pg/mL



Cytometric bead array standard curve of MP50534-1, PROK1 Monoclonal Matched Antibody Pair, PBS Only. Capture antibody: 60417-1-PBS. Detection antibody: 60417-2-PBS. Standard: Ag8079. Range: 0.781-100 ng/mL



Cytometric bead array standard curve of MP50534-2, PROK1 Monoclonal Matched Antibody Pair, PBS Only. Capture antibody: 60417-1-PBS. Detection antibody: 60417-3-PBS. Standard: Ag8079. Range: 0.781-100 ng/mL



Cytometric bead array standard curve of MP50534-3, PROK1 Monoclonal Matched Antibody Pair, PBS Only. Capture antibody: 60417-1-PBS. Detection antibody: 60417-4-PBS. Standard: Ag8079. Range: 3.125-100 ng/mL