

For Research Use Only

ATP5L Monoclonal antibody, PBS Only (Capture)

Catalog Number: 60434-1-PBS



Basic Information

Catalog Number: 60434-1-PBS	GenBank Accession Number: BC015128	Purification Method: Protein G Magarose purification
Size: 1 mg/ml	GeneID (NCBI): 10632	CloneNo.: 2D10F9
Source: Mouse	UNIPROT ID: O75964	
Isotype: IgG1	Full Name: ATP synthase, H ⁺ transporting, mitochondrial FO complex, subunit G	
Immunogen Catalog Number: AG9287	Calculated MW: 11 kDa	

Applications

Tested Applications:
IF/ICC, Cytometric bead array, Indirect ELISA

Species Specificity:
human

Background Information

Mitochondrial membrane ATP synthase (F₁-F_o ATP synthase or Complex V) produces ATP from ADP in the presence of a proton gradient across the membrane which is generated by electron transport complexes of the respiratory chain. It is composed of the soluble catalytic core, F₁, and the membrane-spanning component and F_o, which comprises the proton channel. The F_o seems to have nine subunits (a, b, c, d, e, f, g, F6 and 8). ATP5L gene encodes ATP synthase subunit g of the F_o complex.

Storage

Storage:
Store at -80°C.
The product is shipped with ice packs. Upon receipt, store it immediately at -80°C

Storage Buffer:
PBS Only

For technical support and original validation data for this product please contact:

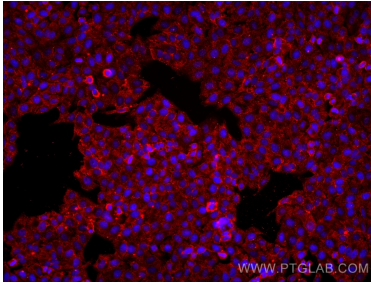
T: 4006900926

E: Proteintech-CN@ptglab.com

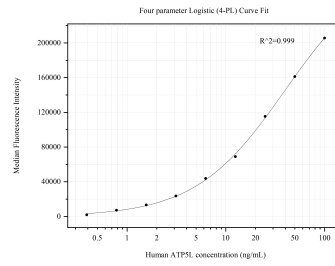
W: ptgcn.com

This product is exclusively available under Proteintech Group brand and is not available to purchase from any other manufacturer.

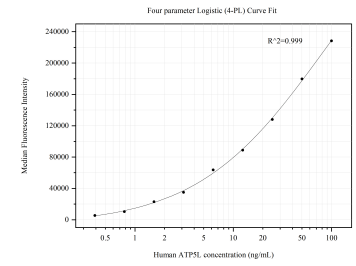
Selected Validation Data



Immunofluorescent analysis of (4% PFA) fixed HepG2 cells using ATP5L antibody (60434-1-Ig, Clone: 2D10F9) at dilution of 1:1000 and Multi-rAb CoraLite® Plus 594-Goat Anti-Mouse Recombinant Secondary Antibody (H+L) (Cat.NO. RGAM004). This data was developed using the same antibody clone with 60434-1-PBS in a different storage buffer formulation.



Cytometric bead array standard curve of MP50581-1, ATP5L Monoclonal Matched Antibody Pair, PBS Only. Capture antibody: 60434-1-PBS. Detection antibody: 60434-2-PBS. Standard: Ag9287. Range: 0.391-100 ng/mL



Cytometric bead array standard curve of MP50581-2, ATP5L Monoclonal Matched Antibody Pair, PBS Only. Capture antibody: 60434-1-PBS. Detection antibody: 60434-3-PBS. Standard: Ag9287. Range: 0.391-100 ng/mL