

For Research Use Only

# SLC25A3 Monoclonal antibody, PBS Only (Detector)

Catalog Number: 60451-4-PBS



## Basic Information

Catalog Number:

60451-4-PBS

Size:

1 mg/ml

Source:

Mouse

Isotype:

IgG1

Immunogen Catalog Number:

AG4377

GenBank Accession Number:

BC003504

GeneID (NCBI):

5250

UNIPROT ID:

Q00325

Full Name:

solute carrier family 25  
(mitochondrial carrier; phosphate  
carrier), member 3

Calculated MW:

40 kDa

Purification Method:

Protein G Magarose purification

CloneNo.:

2B6F6

## Applications

Tested Applications:

Cytometric bead array, Indirect ELISA

Species Specificity:

human

## Background Information

### Storage

Storage:

Store at -80°C.

**The product is shipped with ice packs. Upon receipt, store it immediately at -80°C**

Storage Buffer:

PBS Only

For technical support and original validation data for this product please contact:

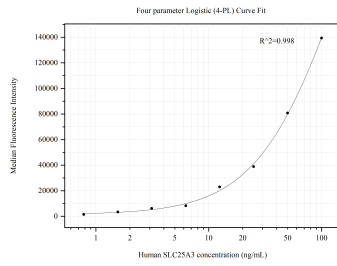
T: 4006900926

E: [Proteintech-CN@ptglab.com](mailto:Proteintech-CN@ptglab.com)

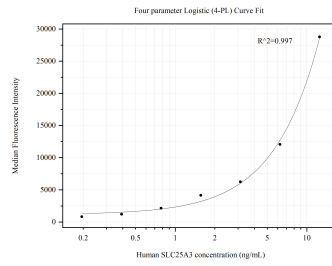
W: [ptgcn.com](http://ptgcn.com)

**This product is exclusively available under Proteintech Group brand and is not available to purchase from any other manufacturer.**

## Selected Validation Data



Cytometric bead array standard curve of MP50610-2, SLC25A3 Monoclonal Matched Antibody Pair, PBS Only. Capture antibody: 60451-3-PBS. Detection antibody: 60451-4-PBS. Standard: Ag4377. Range: 0.781-100 ng/mL.



Cytometric bead array standard curve of MP50610-3, SLC25A3 Monoclonal Matched Antibody Pair, PBS Only. Capture antibody: 60451-5-PBS. Detection antibody: 60451-4-PBS. Standard: Ag4377. Range: 0.195-12.5 ng/mL.