

For Research Use Only

# DCP1A Monoclonal antibody

Catalog Number:60494-1-Ig



## Basic Information

Catalog Number:

60494-1-Ig

Size:

1000 ug/ml

Source:

Mouse

Isotype:

IgG2a

Immunogen Catalog Number:

AG18706

GenBank Accession Number:

BC007439

GeneID (NCBI):

55802

UNIPROT ID:

Q9NPI6

Full Name:

DCP1 decapping enzyme homolog A  
(S. cerevisiae)

Calculated MW:

582 aa, 63 kDa

Observed MW:

70 kDa

Purification Method:

Protein A purification

CloneNo.:

2D11E2

Recommended Dilutions:

WB 1:5000-1:50000

## Applications

Tested Applications:

WB, ELISA

Species Specificity:

human, mouse, rat, pig

Positive Controls:

WB : LoVo cells, rat brain tissue, HCT 116 cells, HEK-293 cells, Jurkat cells, MOLT-4 cells, Raji cells, mouse brain tissue, pig brain tissue

## Background Information

DCP1 decapping enzyme homolog A (S. cerevisiae), known as mRNA-decapping enzyme 1A (DCP1A), is necessary for the degradation of mRNAs, both in normal mRNA turnover and in nonsense-mediated mRNA decay. Removes the 7-methyl guanine cap structure from mRNA molecules, yielding a 5'-phosphorylated mRNA fragment and 7m-GDP. Contributes to the transactivation of target genes after stimulation by TGFB1. This antibody specifically reacts with the 70kd DCP1A protein.

## Storage

Storage:

Store at -20°C. Stable for one year after shipment.

Storage Buffer:

PBS with 0.02% sodium azide and 50% glycerol pH 7.3.

Aliquoting is unnecessary for -20°C storage

For technical support and original validation data for this product please contact:

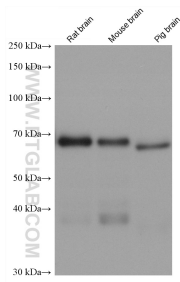
T: 4006900926

E: [Proteintech-CN@ptglab.com](mailto:Proteintech-CN@ptglab.com)

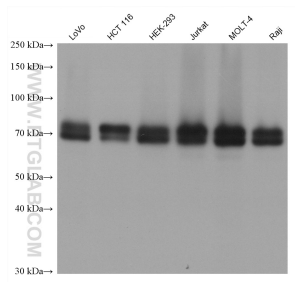
W: [ptgcn.com](http://ptgcn.com)

This product is exclusively available under Proteintech Group brand and is not available to purchase from any other manufacturer.

## Selected Validation Data



Various lysates were subjected to SDS PAGE followed by western blot with 60494-1-Ig (DCP1A antibody) at dilution of 1:10000 incubated at room temperature for 1.5 hours.



Various lysates were subjected to SDS PAGE followed by western blot with 60494-1-Ig (DCP1A antibody) at dilution of 1:10000 incubated at room temperature for 1.5 hours.