

For Research Use Only

PARP1 Monoclonal antibody, PBS Only (Detector)

Catalog Number: 60555-2-PBS



Basic Information

Catalog Number:

60555-2-PBS

Size:

1 mg/ml

Source:

Mouse

Isotype:

IgG1

GenBank Accession Number:

BC037545

GeneID (NCBI):

142

UNIPROT ID:

P09874

Full Name:

poly (ADP-ribose) polymerase 1

Calculated MW:

1014 aa, 113 kDa

Purification Method:

Protein G Magarose purification

CloneNo.:

3G10G11

Applications

Tested Applications:

Indirect ELISA, Sample test

Species Specificity:

human

Background Information

Storage

Storage:

Store at -80°C.

The product is shipped with ice packs. Upon receipt, store it immediately at -80°C

Storage Buffer:

PBS Only

For technical support and original validation data for this product please contact:

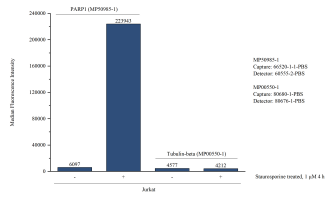
T: 4006900926

E: Proteintech-CN@ptglab.com

W: ptgcn.com

This product is exclusively available under Proteintech Group brand and is not available to purchase from any other manufacturer.

Selected Validation Data



Cytometric bead array in cell lysate using MP50985-1, Cleaved PARP1 Monoclonal Matched Antibody Pair, PBS Only. Capture antibody: 66520-1-PBS. Detection antibody: 60555-2-PBS. Cell lysate: Non-treated Jurkat and Staurosporine treated Jurkat (10 μg/well). Non-related target Tubulin-beta Recombinant Matched Antibody Pair (MP00550-1) was served as control.