

For Research Use Only

# PARP1 Monoclonal antibody, PBS Only (Capture)

Catalog Number: 60555-3-PBS



## Basic Information

Catalog Number:

60555-3-PBS

Size:

1 mg/ml

Source:

Mouse

Isotype:

IgG1

GenBank Accession Number:

BC037545

GeneID (NCBI):

142

UNIPROT ID:

P09874

Full Name:

poly (ADP-ribose) polymerase 1

Calculated MW:

1014 aa, 113 kDa

Purification Method:

Protein G purification

CloneNo.:

1E7E12

## Applications

Tested Applications:

Indirect ELISA, Sample test

Species Specificity:

human

## Background Information

### Storage

Storage:

Store at -80°C.

The product is shipped with ice packs. Upon receipt, store it immediately at -80°C

Storage Buffer:

PBS Only

For technical support and original validation data for this product please contact:

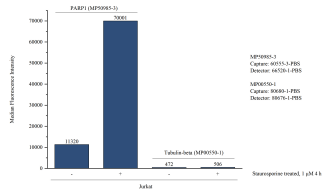
T: 4006900926

E: [Proteintech-CN@ptglab.com](mailto:Proteintech-CN@ptglab.com)

W: [ptgcn.com](http://ptgcn.com)

This product is exclusively available under Proteintech Group brand and is not available to purchase from any other manufacturer.

## Selected Validation Data



Cytometric bead array in cell lysate using MP50985-3, Human only PARP1 Monoclonal Matched Antibody Pair, PBS Only. Capture antibody: 60555-3-PBS. Detection antibody: 66520-1-PBS. Cell lysate: Non-treated Jurkat and Staurosporine treated Jurkat (10 μg/well). Non-related target Tubulin-beta Recombinant Matched Antibody Pair (MP00550-1) was served as control.