

For Research Use Only

# LSM14A Monoclonal antibody, PBS Only (Capture)

Catalog Number: 60563-1-PBS



## Basic Information

|   |   |  |
|---|---|--|
| <b>Catalog Number:</b><br>60563-1-PBS       | <b>GenBank Accession Number:</b><br>BC016842                | <b>Purification Method:</b><br>Protein A Magarose purification |
| <b>Size:</b><br>1 mg/ml                     | <b>GeneID (NCBI):</b><br>26065                              | <b>CloneNo.:</b><br>1D5E12                                     |
| <b>Source:</b><br>Mouse                     | <b>UNIPROT ID:</b><br>Q8ND56                                |  |
| <b>Isotype:</b><br>IgG2a                    | <b>Full Name:</b><br>LSM14A, SCD6 homolog A (S. cerevisiae) |  |
| <b>Immunogen Catalog Number:</b><br>AG12997 | <b>Calculated MW:</b><br>463 aa, 51 kDa                     |  |

## Applications

**Tested Applications:**  
Cytometric bead array, Indirect ELISA

**Species Specificity:**  
human

## Background Information

### Storage

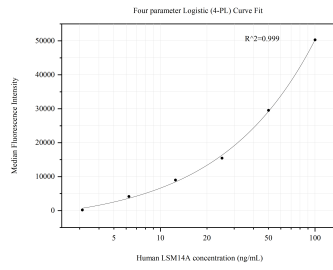
**Storage:**  
Store at -80°C.  
**The product is shipped with ice packs. Upon receipt, store it immediately at -80°C**

**Storage Buffer:**  
PBS Only

For technical support and original validation data for this product please contact:  
T: 4006900926      E: Proteintech-CN@ptglab.com      W: ptgcn.com

**This product is exclusively available under Proteintech Group brand and is not available to purchase from any other manufacturer.**

## Selected Validation Data



Cytometric bead array standard curve of MP50794-1, LSM14A Monoclonal Matched Antibody Pair, PBS Only. Capture antibody: 60563-1-PBS. Detection antibody: 60563-2-PBS. Standard: Ag12997. Range: 3.125-100 ng/mL.