

For Research Use Only

# CYP2C9 Monoclonal antibody, PBS Only (Capture)

Catalog Number: 60576-1-PBS



## Basic Information

Catalog Number:

60576-1-PBS

Size:

1 mg/ml

Source:

Mouse

Isotype:

IgG1

Immunogen Catalog Number:

AG9566

GenBank Accession Number:

BC020754

GeneID (NCBI):

1559

UNIPROT ID:

P11712

Full Name:

cytochrome P450, family 2, subfamily C, polypeptide 9

Calculated MW:

162aa, 18 kDa; 490aa, 56 kDa

Purification Method:

Protein G Magarose purification

CloneNo.:

1D7G1

## Applications

Tested Applications:

Cytometric bead array, Indirect ELISA

Species Specificity:

human

## Background Information

### Storage

Storage:

Store at -80°C.

**The product is shipped with ice packs. Upon receipt, store it immediately at -80°C**

Storage Buffer:

PBS Only

For technical support and original validation data for this product please contact:

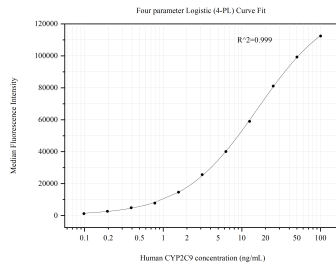
T: 4006900926

E: [Proteintech-CN@ptglab.com](mailto:Proteintech-CN@ptglab.com)

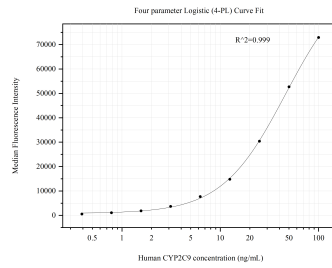
W: [ptgcn.com](http://ptgcn.com)

**This product is exclusively available under Proteintech Group brand and is not available to purchase from any other manufacturer.**

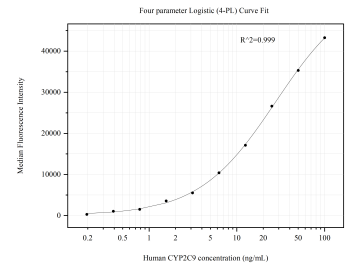
## Selected Validation Data



Cytometric bead array standard curve of MP50815-1, CYP2C9 Monoclonal Matched Antibody Pair, PBS Only. Capture antibody: 60576-1-PBS. Detection antibody: 60576-2-PBS. Standard:Ag9566. Range: 0.098-100 ng/mL



Cytometric bead array standard curve of MP50815-2, CYP2C9 Monoclonal Matched Antibody Pair, PBS Only. Capture antibody: 60576-1-PBS. Detection antibody: 60576-3-PBS. Standard:Ag9566. Range: 0.391-100 ng/mL



Cytometric bead array standard curve of MP50815-3, CYP2C9 Monoclonal Matched Antibody Pair, PBS Only. Capture antibody: 60576-1-PBS. Detection antibody: 60576-4-PBS. Standard:Ag9566. Range: 0.195-100 ng/mL