

For Research Use Only

# MMP-9 Monoclonal antibody, PBS Only (Detector)

Catalog Number: 60600-2-PBS



## Basic Information

Catalog Number:

60600-2-PBS

Size:

1 mg/ml

Source:

Mouse

Isotype:

IgG1

GenBank Accession Number:

BC006093

GeneID (NCBI):

4318

UNIPROT ID:

P14780

Full Name:

matrix metalloproteinase 9  
(gelatinase B, 92kDa gelatinase,  
92kDa type IV collagenase)

Calculated MW:

707 aa, 78 kDa

Purification Method:

Protein G purification

CloneNo.:

1E5G7

## Applications

Tested Applications:

Indirect ELISA, Sample test

Species Specificity:

human

## Background Information

### Storage

Storage:

Store at -80°C.

**The product is shipped with ice packs. Upon receipt, store it immediately at -80°C**

Storage Buffer:

PBS Only

For technical support and original validation data for this product please contact:

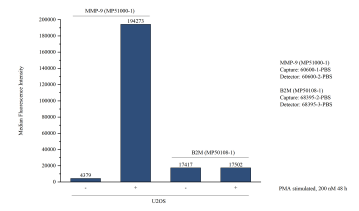
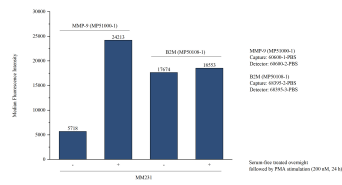
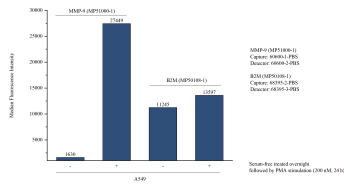
T: 4006900926

E: [Proteintech-CN@ptglab.com](mailto:Proteintech-CN@ptglab.com)

W: [ptgcn.com](http://ptgcn.com)

**This product is exclusively available under Proteintech Group brand and is not available to purchase from any other manufacturer.**

## Selected Validation Data



Cytometric bead array of A549 cells supernatant using MP51000-1, MMP-9 Monoclonal Matched Antibody Pair, PBS Only. Capture antibody: 60600-1-PBS. Detection antibody: 60600-2-PBS. A549 cells were cultured in serum-free media overnight followed by PMA stimulation (200 nM, 24 h). 50  $\mu$  L of the supernatant was analyzed using MP51000-1 (MMP-9 Monoclonal Matched Antibody Pair). Non-related target B2M Monoclonal Matched Antibody Pair (MP50108-



Cytometric bead array of MM231 cells supernatant using MP51000-1, MMP-9 Monoclonal Matched Antibody Pair, PBS Only. Capture antibody: 60600-1-PBS. Detection antibody: 60600-2-PBS. MM231 cells were cultured in serum-free media overnight followed by PMA stimulation (200 nM, 24 h). 50  $\mu$  L of the supernatant was analyzed using MP51000-1 (MMP-9 Monoclonal Matched Antibody Pair). Non-related target B2M Monoclonal Matched Antibody Pair (MP50108-



Cytometric bead array of U2OS cells supernatant using MP51000-1, MMP-9 Monoclonal Matched Antibody Pair, PBS Only. Capture antibody: 60600-1-PBS. Detection antibody: 60600-2-PBS. U2OS cells were cultured for 2 days in normal culture media or PMA (200nM, 48h) containing media. 50  $\mu$  L of the supernatant was analyzed using MP51000-1 (MMP-9 Monoclonal Matched Antibody Pair). Non-related target B2M Monoclonal Matched Antibody Pair (MP50108-1) was served as

