

For Research Use Only

# IGF2BP2 Monoclonal antibody, PBS Only

Catalog Number: 60647-1-PBS



## Basic Information

Catalog Number:

60647-1-PBS

Size:

1 mg/ml

Source:

Mouse

Isotype:

IgG2b

Immunogen Catalog Number:

AG33681

GenBank Accession Number:

BC021290

GeneID (NCBI):

10644

UNIPROT ID:

Q9Y6M1

Full Name:

insulin-like growth factor 2 mRNA binding protein 2

Calculated MW:

65 kDa

Observed MW:

65-70 kDa

Purification Method:

Protein A purification

CloneNo.:

1E5H8

## Applications

Tested Applications:

WB, Indirect ELISA

Species Specificity:

human

## Background Information

Insulin-like growth factor 2 mRNA-binding protein 2(IGF2BP2), is a member of a family of mRNA binding protein, which can bind to several mammalian cells' mRNAs. Thus it may involve in the regulation of translation of mRNA. IGF2BP2's polymorphisms is risk factor for developing type 2 diabetes. This antibody raise against part of N-terminus of human IGF2BP2. IGF2BP2 has some isoforms with the MW of 54-66 kDa. Some literature has reported that multiple bands can be detected (PMID: 22427968, 36322753, 23069990).

## Storage

Storage:

Store at -80°C.

The product is shipped with ice packs. Upon receipt, store it immediately at -80°C

Storage Buffer:

PBS Only

For technical support and original validation data for this product please contact:

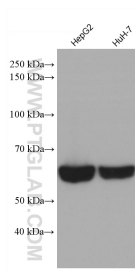
T: 4006900926

E: [Proteintech-CN@ptglab.com](mailto:Proteintech-CN@ptglab.com)

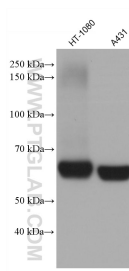
W: [ptgcn.com](http://ptgcn.com)

This product is exclusively available under Proteintech Group brand and is not available to purchase from any other manufacturer.

## Selected Validation Data



Various lysates were subjected to SDS PAGE followed by western blot with 60647-1-Ig (IGF2BP2 antibody) at dilution of 1:10000 incubated at room temperature for 1.5 hours. This data was developed using the same antibody clone with 60647-1-PBS in a different storage buffer formulation.



Various lysates were subjected to SDS PAGE followed by western blot with 60647-1-Ig (IGF2BP2 antibody) at dilution of 1:10000 incubated at room temperature for 1.5 hours. This data was developed using the same antibody clone with 60647-1-PBS in a different storage buffer formulation.