

For Research Use Only

CHI3L1 Monoclonal antibody, PBS Only (Capture)

Catalog Number: 60662-3-PBS



Basic Information

Catalog Number:

60662-3-PBS

Size:

1 mg/ml

Source:

Mouse

Isotype:

IgG1

Immunogen Catalog Number:

AG22042

GenBank Accession Number:

BC008568

GeneID (NCBI):

1116

UNIPROT ID:

P36222

Full Name:

chitinase 3-like 1 (cartilage glycoprotein-39)

Calculated MW:

383 aa, 43 kDa

Purification Method:

Protein G Magarose purification

CloneNo.:

1B8E8

Applications

Tested Applications:

Cytometric bead array, Indirect ELISA

Species Specificity:

human

Background Information

Storage

Storage:

Store at -80°C.

The product is shipped with ice packs. Upon receipt, store it immediately at -80°C

Storage Buffer:

PBS Only

For technical support and original validation data for this product please contact:

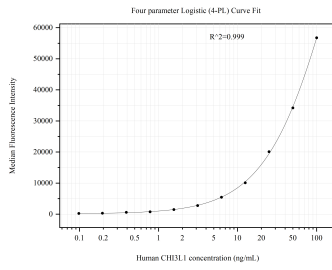
T: 4006900926

E: Proteintech-CN@ptglab.com

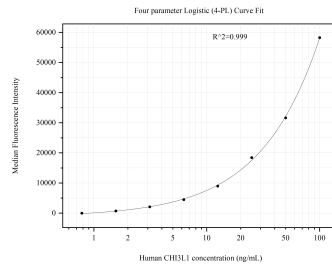
W: ptgcn.com

This product is exclusively available under Proteintech Group brand and is not available to purchase from any other manufacturer.

Selected Validation Data



Cytometric bead array standard curve of MP50945-2, CHI3L1 Monoclonal Matched Antibody Pair, PBS Only. Capture antibody: 60662-3-PBS. Detection antibody: 60662-4-PBS. Standard:Ag22042. Range: 0.098-100 ng/mL.



Cytometric bead array standard curve of MP50945-3, CHI3L1 Monoclonal Matched Antibody Pair, PBS Only. Capture antibody: 60662-3-PBS. Detection antibody: 60662-5-PBS. Standard:Ag22042. Range: 0.781-100 ng/mL.