

For Research Use Only

# SLC43A1 Monoclonal antibody, PBS Only (Detector)

Catalog Number:60667-2-PBS



## Basic Information

Catalog Number: 60667-2-PBS	GenBank Accession Number: BC001639	Purification Method: Protein G purification
Size: 1 mg/ml	GeneID (NCBI): 8501	CloneNo.: 1C5A1
Source: Mouse	UNIPROT ID: O75387	
Isotype: IgG1	Full Name: solute carrier family 43, member 1	
Immunogen Catalog Number: AG31817	Calculated MW: 61 kDa	

## Applications

Tested Applications:  
Cytometric bead array, Indirect ELISA

Species Specificity:  
human

## Background Information

### Storage

Storage:  
Store at -80°C.  
The product is shipped with ice packs. Upon receipt, store it immediately at -80°C

Storage Buffer:  
PBS Only

For technical support and original validation data for this product please contact:

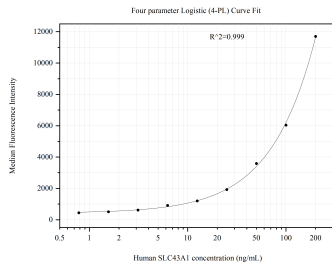
T: 4006900926

E: [Proteintech-CN@ptglab.com](mailto:Proteintech-CN@ptglab.com)

W: [ptgcn.com](http://ptgcn.com)

This product is exclusively available under Proteintech Group brand and is not available to purchase from any other manufacturer.

## Selected Validation Data



Cytometric bead array standard curve of MP50952-1, SLC43A1 Monoclonal Matched Antibody Pair, PBS Only. Capture antibody: 60667-1-PBS. Detection antibody: 60667-2-PBS. Standard:Ag31817. Range: 0.781-200 ng/mL.