

For Research Use Only

ZMPSTE24 Monoclonal antibody, PBS Only (Capture)

Catalog Number:60674-2-PBS



Basic Information

Catalog Number:

60674-2-PBS

Size:

1 mg/ml

Source:

Mouse

Isotype:

IgG1

Immunogen Catalog Number:

AG3949

GenBank Accession Number:

BC037283

GeneID (NCBI):

10269

UNIPROT ID:

O75844

Full Name:

zinc metallopeptidase (STE24 homolog, *S. cerevisiae*)

Calculated MW:

475 aa, 55 kDa

Purification Method:

Protein G Magarose purification

CloneNo.:

1G10F3

Applications

Tested Applications:

Cytometric bead array, Indirect ELISA

Species Specificity:

human

Background Information

Storage

Storage:

Store at -80°C.

The product is shipped with ice packs. Upon receipt, store it immediately at -80°C

Storage Buffer:

PBS Only

For technical support and original validation data for this product please contact:

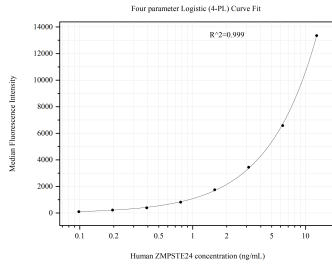
T: 4006900926

E: Proteintech-CN@ptglab.com

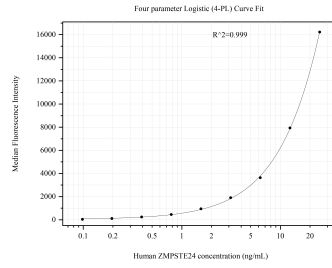
W: ptgcn.com

This product is exclusively available under Proteintech Group brand and is not available to purchase from any other manufacturer.

Selected Validation Data



Cytometric bead array standard curve of MP50967-2, ZMPSTE24 Monoclonal Matched Antibody Pair, PBS Only. Capture antibody: 60674-2-PBS. Detection antibody: 60675-1-PBS. Standard:Ag33613. Range: 0.098-12.5 ng/mL



Cytometric bead array standard curve of MP50967-3, ZMPSTE24 Monoclonal Matched Antibody Pair, PBS Only. Capture antibody: 60674-2-PBS. Detection antibody: 60675-2-PBS. Standard:Ag33613. Range: 0.098-25 ng/mL