

For Research Use Only

SLC20A1 Monoclonal antibody, PBS Only (Detector)

Catalog Number:60725-1-PBS



Basic Information

Catalog Number:

60725-1-PBS

Size:

1 mg/ml

Source:

Mouse

Isotype:

IgG1

Immunogen Catalog Number:

AG3084

GenBank Accession Number:

BC019944

GeneID (NCBI):

6574

UNIPROT ID:

Q8WUM9

Full Name:

solute carrier family 20 (phosphate transporter), member 1

Calculated MW:

679 aa, 74 kDa

Purification Method:

Protein G Magarose purification

CloneNo.:

1B3G11

Applications

Tested Applications:

Cytometric bead array, Indirect ELISA

Species Specificity:

human

Background Information

Storage

Storage:

Store at -80°C.

The product is shipped with ice packs. Upon receipt, store it immediately at -80°C

Storage Buffer:

PBS Only

For technical support and original validation data for this product please contact:

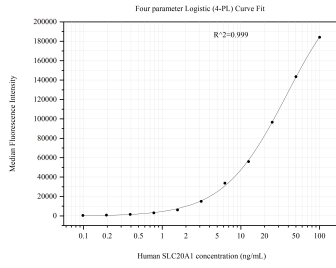
T: 4006900926

E: Proteintech-CN@ptglab.com

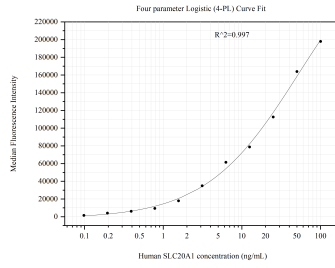
W: ptgcn.com

This product is exclusively available under Proteintech Group brand and is not available to purchase from any other manufacturer.

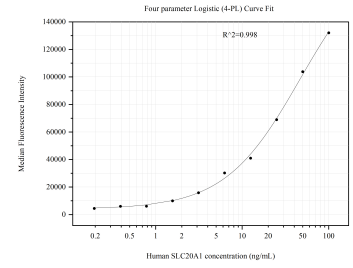
Selected Validation Data



Cytometric bead array standard curve of MP51039-1, SLC20A1 Monoclonal Matched Antibody Pair, PBS Only. Capture antibody: 60724-1-PBS. Detection antibody: 60725-1-PBS. Standard:Ag3084. Range: 0.098-100 ng/mL



Cytometric bead array standard curve of MP51039-3, SLC20A1 Monoclonal Matched Antibody Pair, PBS Only. Capture antibody: 60725-3-PBS. Detection antibody: 60725-1-PBS. Standard:Ag3084. Range: 0.098-100 ng/mL



Cytometric bead array standard curve of MP51039-4, SLC20A1 Monoclonal Matched Antibody Pair, PBS Only. Capture antibody: 60725-4-PBS. Detection antibody: 60725-1-PBS. Standard:Ag3084. Range: 0.195-100 ng/mL