

For Research Use Only

# SLC20A1 Monoclonal antibody, PBS Only (Capture)

Catalog Number: 60725-3-PBS



## Basic Information

Catalog Number:

60725-3-PBS

Size:

1 mg/ml

Source:

Mouse

Isotype:

IgG2a

Immunogen Catalog Number:

AG3084

GenBank Accession Number:

BC019944

GeneID (NCBI):

6574

UNIPROT ID:

Q8WUM9

Full Name:

solute carrier family 20 (phosphate transporter), member 1

Calculated MW:

679 aa, 74 kDa

Purification Method:

Protein A Magarose purification

CloneNo.:

3D12D5

## Applications

Tested Applications:

Cytometric bead array, Indirect ELISA

Species Specificity:

human

## Background Information

### Storage

Storage:

Store at -80°C.

**The product is shipped with ice packs. Upon receipt, store it immediately at -80°C**

Storage Buffer:

PBS Only

For technical support and original validation data for this product please contact:

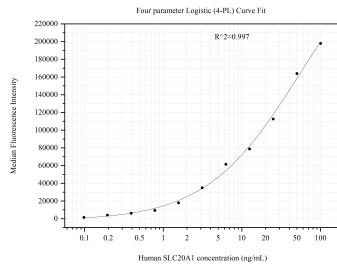
T: 4006900926

E: [Proteintech-CN@ptglab.com](mailto:Proteintech-CN@ptglab.com)

W: [ptgcn.com](http://ptgcn.com)

**This product is exclusively available under Proteintech Group brand and is not available to purchase from any other manufacturer.**

## Selected Validation Data



Cytometric bead array standard curve of MP51039-3, SLC20A1 Monoclonal Matched Antibody Pair, PBS Only. Capture antibody: 60725-3-PBS. Detection antibody: 60725-1-PBS. Standard:Ag3084. Range: 0.098-100 ng/mL.