

For Research Use Only

CCL22/MDC Monoclonal antibody, PBS Only (Capture)

Catalog Number: 60754-1-PBS



Basic Information

Catalog Number: 60754-1-PBS	GenBank Accession Number: BC027952	Purification Method: Protein G Magarose purification
Concentration: 1 mg/ml	GeneID (NCBI): 6367	CloneNo.: 1G5E10
Source: Mouse	UNIPROT ID: O00626	
Isotype: IgG1	Full Name: chemokine (C-C motif) ligand 22	
Immunogen Catalog Number: AG4275	Calculated MW: 93 aa, 11 kDa	

Applications

Tested Applications:
Cytometric bead array, Indirect ELISA, Sample test

Species Specificity:
human

Background Information

Storage

Storage:
Store at -80°C.
The product is shipped with ice packs. Upon receipt, store it immediately at -80°C

Storage Buffer:
PBS Only

For technical support and original validation data for this product please contact:

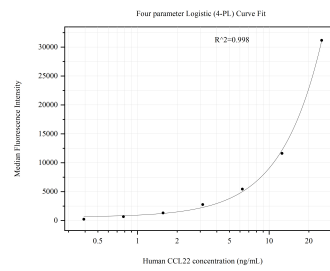
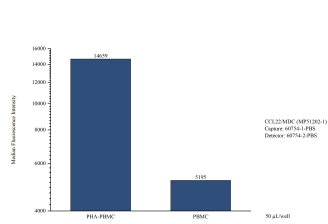
T: 4006900926

E: Proteintech-CN@ptglab.com

W: ptgcn.com

This product is exclusively available under Proteintech Group brand and is not available to purchase from any other manufacturer.

Selected Validation Data



Cytometric bead array of Human peripheral blood mononuclear cells (PBMC) supernatant using MP51202-1, CCL22/MDC Monoclonal Matched Antibody Pair, PBS Only. Capture antibody: 60754-1-PBS. Detection antibody: 60754-2-PBS. PBMC were cultured unstimulated or stimulated with 10 μ g/mL PHA for 3 days. 50 μ L of the supernatant was analyzed using MP51202-1.

Cytometric bead array standard curve of MP51202-1, CCL22/MDC Monoclonal Matched Antibody Pair, PBS Only. Capture antibody: 60754-1-PBS. Detection antibody: 60754-2-PBS. Standard: Ag4275. Range: 0.391-25 ng/mL.