

For Research Use Only

# Anti-Mouse CD357 (GITR) (DTA-1)

Catalog Number: 65102-1-Ig



## Basic Information

Catalog Number:

65102-1-Ig

Size:

500ug, 0.5 mg/mL

Source:

Rat

Isotype:

IgG2b, kappa

GenBank Accession Number:

BC146517

GeneID (NCBI):

21936

Full Name:

tumor necrosis factor receptor  
superfamily, member 18

Purification Method:

Affinity purification

CloneNo.:

DTA-1

## Applications

Tested Applications:

FC

Species Specificity:

Mouse

## Background Information

Glucocorticoid-induced TNFR-related protein (GITR), also known as CD357 or TNFRSF18, is a member of the tumor necrosis factor receptor (TNF-R) superfamily. GITR is expressed constitutively at high levels in T regulatory cells (Treg cells) and plays a key role in dominant immunological self-tolerance maintained by CD25+CD4+ regulatory T cells (PMID: 11812990). It is expressed at low levels on resting responder T cells. The expression of GITR on T cells can be upregulated upon activation (PMID: 15770698). GITR is activated by GITR ligand (GITRL) which is mainly expressed on APC. GITR-GITRL interactions could co-stimulate both responder T-cell functions and the suppressive functions of Treg cells (PMID: 16868552).

## Storage

Storage:

Store at 2-8°C. Stable for one year after shipment.

Storage Buffer:

PBS with 0.09% sodium azide.

For technical support and original validation data for this product please contact:

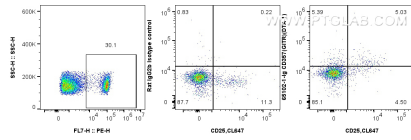
T: 4006900926

E: [Proteintech-CN@ptglab.com](mailto:Proteintech-CN@ptglab.com)

W: [ptgcn.com](http://ptgcn.com)

This product is exclusively available under Proteintech Group brand and is not available to purchase from any other manufacturer.

## Selected Validation Data



1x10<sup>6</sup> mouse splenocytes were surface stained with 0.5 ug Anti-Mouse CD357 (GITR) (65102-1-Ig, Clone:DTA-1) or 0.5 ug Rat IgG2b Isotype Control (LTF-2) (65211-1-Ig, Clone: LTF-2) and FITC anti-rat IgG2b Antibody at dilution 1:100. Cells were co-stained with CoraLite 647 Anti-Human CD25. CD4<sup>+</sup> cells were gated. Cells were not fixed.